

PAI(Positional Accuracy Improvement) for the Korea Cadastral Resurvey Project

FIG ROME/ 2012. 5.

Dekkie, TCHA

Dr. / General Manager of
SIRI(Spatial Information Research Institute)
Korea Cadastral Survey Corp.

 Korea Cadastral Survey Corp.,

1/10

1. Introduction

- Korea Cadastral Resurvey Project
 - Duration : FY 2012~2030
 - Budget : about 1 Bil. US\$
 - Law : Special Cadastral Resurvey Law
(the 13thMarch, 2012)

 Korea Cadastral Survey Corp.,

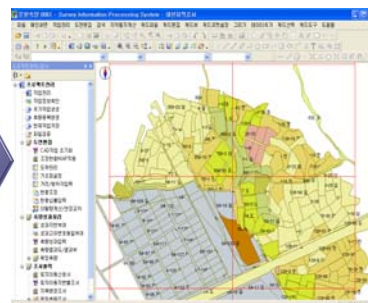
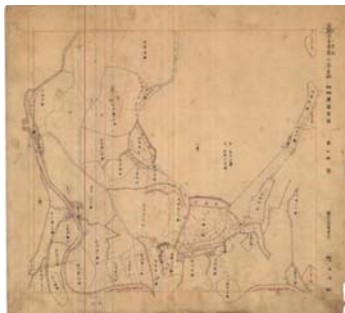
2. History

- Land survey project (1910~1917)
- Forest survey project (1912~1918)
- Fiscal purpose (Tax)



3. Current status

- Some Changes
 - Digitalization of old cadastral maps
 - New Total Surveying System using Tablet PC

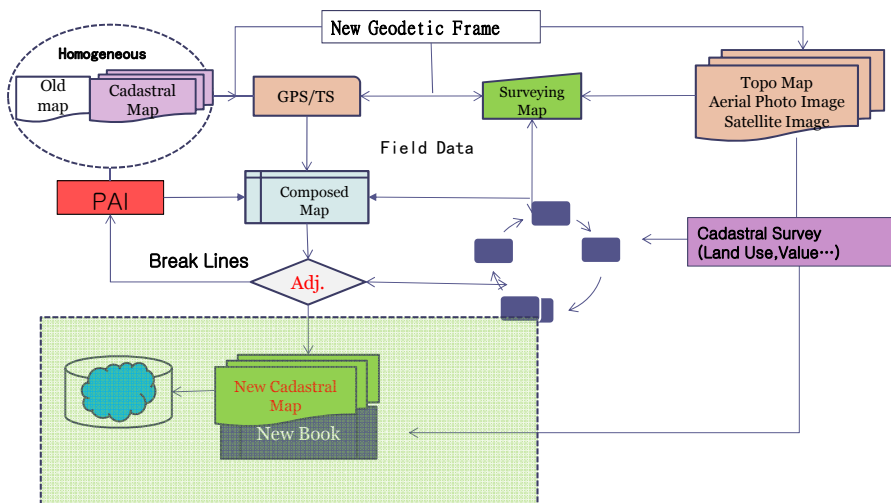


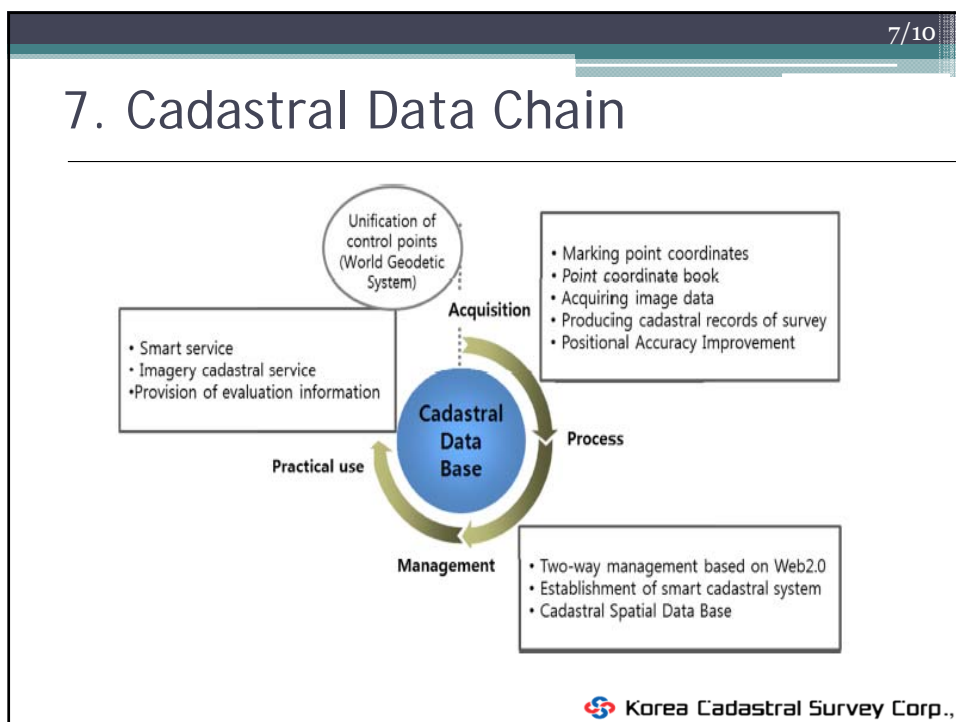
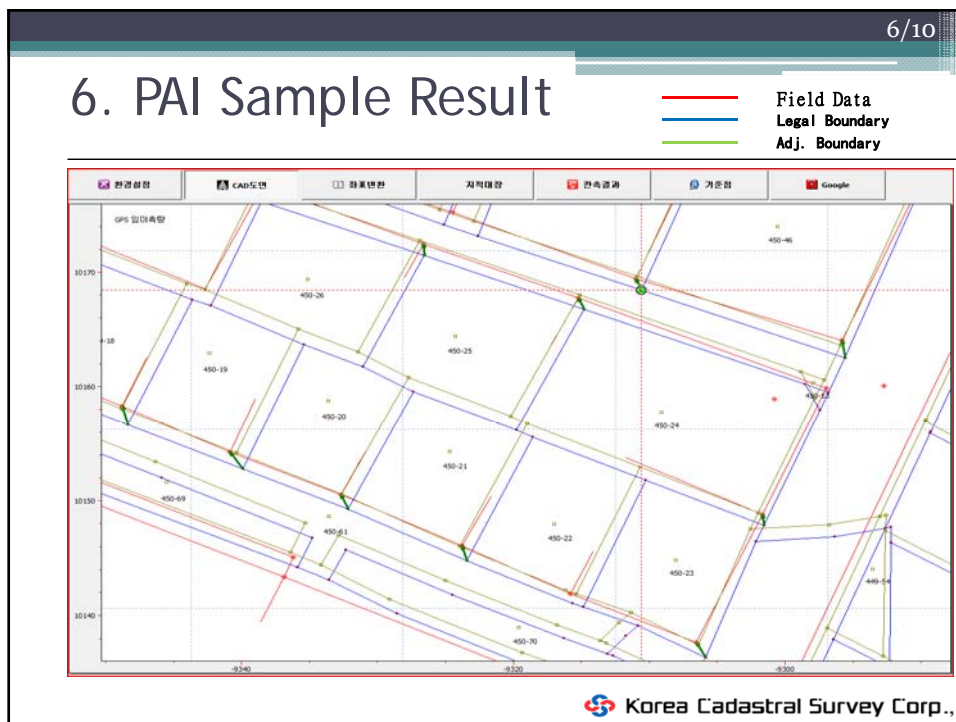
4. New Technology

- Network-RTK
- Image Based Solutions
- Social Network Map
- Video Map



5. PAI Procedure





8. Improvement of Resurvey

Category	Current	Future	Remark
Booking System	Map & Book	Integrated with Real Estate Information	
Data Format	Analog	Digital	
Geodetic Frame	Bessel	ITRF	2020
Dimension	2D	2.5/3/4 D	
Accuracy	12cm	3cm	
Registration Objects	Boundary	+Building,...	

9. Conclusion

To be...

1. Frame : ITRF/KTM(Korean TM)-2010
2. Conception : Digital Cadastre System
3. Technology : Network-RTK & TS, Images
4. Services : Open Platform for the Spatial Information