

The Agenda for a Group of Experts on Land Administration and Management within the United Nations

Kees DE ZEEUW ,The Netherlands, Cecille BLAKE ,USA and Mahashe CHAKA ,Lesotho

Key words: United Nations, Global Geospatial Information Management, UN GGIM, Group of Experts, land administration, land governance, land management, sustainable development, UN-EG-LAM.

SUMMARY

During the fourth High Level Forum on United Nations Global Geospatial Information Management (UN GGIM), taking place from April 20-22 2016, a Group of Experts on Land Administration and Management is being launched. With this initiative, UN GGIM envisages to give an impulse to the global development of good land administration and management. This is a basic requirement for social and economic development as defined in the Sustainable Development Goals for 2030 (SDG's).

The overall objective of this UN Group of Experts is to play a leading role at the policy level by raising political awareness and highlighting the importance to decision makers of the need for timely and fit for purpose land administration and management. In this approach both formal and informal rights are considered.

This paper will put in context the importance of land in global issues like the increasing urban populations, food security and equity and rights of women. Based on this context, insight is given in the proposed role and activities of the UN Group of Experts. Within the UN GGIM context it will provide a forum for coordination and dialogue among global experts from the land administration and geospatial communities, with a view to advance the activities related to the administration and management, and strengthening the use of geospatial information for good land governance. Based on a work plan which is initiated in 2016, leadership will be taken to address the geospatial issues, resulting in increased political awareness.

Also this paper will describe how the UN Group of Experts will stimulate and facilitate the cooperation between governmental organizations, NGO's, private sector parties and scientific bodies in order to achieve its objectives. This is captured in a work plan, defining the agenda for the group of experts in the coming years.

The agenda for a Group of Experts on Land Administration and Management within the United Nations (8408)
Kees de Zeeuw (Netherlands), Cecille Blake (USA) and Mahashe Chaka (Lesotho)

FIG Working Week 2016
Recovery from Disaster
Christchurch, New Zealand, May 2–6, 2016

The Agenda for a Group of Experts on Land Administration and Management within the United Nations

Kees DE ZEEUW ,The Netherlands, Cecille BLAKE ,USA and Mahashe CHAKA ,Lesotho

1. THE NEED FOR LAND ADMINISTRATION

The majority of the land area in most developing countries – up to 90 percent in some – is not covered by a formal land record and secure property rights. Approximately 75 percent of the world's population does not have access to formal systems to register and safeguard their land rights. The majority of these are the poor and the most vulnerable in society. Governments must be able to efficiently evaluate and assess situations, formulate strategies, implement and monitor land tenure and registration projects and facilitate the development of transparent and formal land markets that are affordable and sustainable. These functions can only be successfully executed with the use of geospatial information and the application of related information and communication technologies (UN GGIM, 2015).

Land administration is essentially concerned with people-to-land relationship and is thus place-based and people-centric. Good land administration, considering both formal and informal rights of the use and ownership of land, is a basic requirement for social and economic development. The people-to-land relationship has a fundamental role in spatial enablement, where good land governance and management can facilitate government to respond to national and global agendas and achieve sustainable development. Place or location is a key facilitator in decision making, and land administration is identified as an important issue within the domain of the global geospatial information management. The geospatial context not only relates to data management and technological adaptation, but also to governance, capacity building and institutional building.

Securing land rights for the world is a challenging but feasible objective. Methods and land tools do exist and develop rapidly, supported by excellent private companies, modern technology and new information and communication possibilities. Land administration is a process of continuous upgrading to higher levels of detail, quality and usability. By adding capacity building to the game, implementation and true action can be generated (De Zeeuw and Lemmen, 2015).

2. LAND ADMINISTRATION IN RELATION TO GEOSPATIAL INFORMATION

Geospatial information and its management are fundamental to successful land administration and the derived benefits to the economies and overall sustainable development of nations. Furthermore, it is critical to the successful implementation of the Sustainable Development Goals (SDG's) as it is able to provide reliable data on land, including its tenure and dimensions, at local scales. Despite the existence of an array of informed stakeholders working on the subject of land, the United Nations Committee of Experts on Global Geospatial Information Management (UN-GGIM) is

The agenda for a Group of Experts on Land Administration and Management within the United Nations (8408)
Kees de Zeeuw (Netherlands), Cecille Blake (USA) and Mahashe Chaka (Lesotho)

FIG Working Week 2016
Recovery from Disaster
Christchurch, New Zealand, May 2–6, 2016

positioned to provide policy direction and support for geospatial management more broadly, and land administration more specifically, to Member States. In order to address the theme of land administration globally, the United Nations Group of Experts on Land Administration and Management (UN-GE-LAM) was founded and endorsed by the Committee of Experts of UN-GGIM, at its Fifth Session at UN headquarters in New York in August 2015.

In literature different explanation is given to the terms land governance, land administration and land management. The Group of Experts will refer to used terminology, according to broadly accepted definitions.

Land governance has been defined as policies, processes and institutions by which land, property and natural resources are managed. Sound land governance requires a legal regulatory framework and operational processes to implement policies consistently within a jurisdiction or country, in sustainable ways (Enemark, Bell, Lemmen and McLaren, 2014).

Land administration is described as the process of determining, recording and disseminating information about the relationship between people and land. If ownership is understood as the mechanism through which rights to land are held, we can also speak about land tenure. A main characteristic of land tenure is that it reflects a social relationship regarding rights to land, which means that in a certain jurisdiction the relationship between people and land is recognised as a legally valid one. These recognised rights are in principle eligible for registration, with the purpose being to assign a certain legal meaning to the registered right (e.g. a title). Therefore, land administration systems are not just 'handling geographic information', as they represent a lawfully meaningful relationship amongst people, and between people and land (ISO 19152, 2012).

Land Management is the art or science of making informed decisions about the allocation, use and development of the earth's natural and built resources. It includes resource management, land administration arrangements, land policy and land information management (Williamson, Enemark, Wallace and Rajabifard, 2010).

3. TRENDS AND DEVELOPMENTS

Land is the single greatest resource in almost all countries. The management of natural resources and administration of ownership and land-use are treated as national development tools, with their policy outcomes often being pivotal for a country's national circumstances. Land administration provides an important infrastructure for an efficient economy; it touches all aspects of people's lives, including their income generation activities and is fundamental for economic growth and poverty reduction. Clear and secure land tenure can improve livelihoods and sustainable management of natural resources, and promote sustainable development and responsible investment that eradicates poverty and food insecurity. Land tenure security guarantees the existence of land rights, ensures protection of rights through legal remedies, and creates land markets that unlocks its potential as an asset and encourages efficient allocation and transactions.

The agenda for a Group of Experts on Land Administration and Management within the United Nations (8408)
Kees de Zeeuw (Netherlands), Cecille Blake (USA) and Mahashe Chaka (Lesotho)

FIG Working Week 2016
Recovery from Disaster
Christchurch, New Zealand, May 2–6, 2016

A new era in land administration emerges (Lemmen, Bennett, McLaren and Enemark, 2015). One underpinned by a wave of innovative thinking and coupled with quickly maturing, scalable approaches that can be applied globally.

Looking at the trends in the arena of governmental organisations, academia and private sector, it becomes clear that professional worlds converge: Statistics, Geo-sciences, Remote Sensing and Land Administration experts come to together more and more in order to achieve challenging goals like the United Nations Sustainable Development Goals (SDG's).



Figure 1. Professional worlds converge.

The World Bank and the International Federation of Surveyors (FIG) jointly promote the fit-for-purpose land administration approach that enables appropriate land administration systems to be built within a relatively short time, at affordable costs, and with the opportunity to upgrade when required. The fit-for-purpose approach recommends the use of ‘visual boundaries’ to identify the delineation of land rights. There are alternative data acquisition approaches that can be adopted within the context of purpose, budgets and availability of human resources. These range from accurate measurements supported by Continuously Operating Reference Stations (CORS), through total stations and handheld GPS, to the use of a plane table, tape, chain and rope. UAVs are emerging as a promising alternative in cases where only highly accurate data is accepted. Imagery data sources such as Google Maps or Microsoft Virtual Earth can be used, and the inclusion of high-resolution data at those sites may be agreed. Administrative data collection can be paper-based or

The agenda for a Group of Experts on Land Administration and Management within the United Nations (8408)
Kees de Zeeuw (Netherlands), Cecille Blake (USA) and Mahashe Chaka (Lesotho)

FIG Working Week 2016
Recovery from Disaster
Christchurch, New Zealand, May 2–6, 2016

digital. All these data acquisition options can include methods to describe and label data quality elements.

The need for land administration is in principle not about accuracy based on highly technical nationwide standards. Total coverage is urgently needed to secure land rights and manage the use of land, and also to avoid land grabbing and forced evictions and to ensure social justice. A so-called fit-for-purpose approach is fast, affordable and ideal for meeting this requirement. As a second stage, positional accuracy can be improved over time using sporadic approaches. All activities require good management of quality-related metadata and the use of accepted standards (e.g. LADM). Continuous maintenance is needed and should be aligned with quality upgrading through the well-known processes of cadastral renovation, homogenisation, reconciliation and revision (Lemmen *et al.*, 2015).

Satellite imagery and new sensor techniques allow for fast basic inventory of general boundaries, using feature extracting technologies. This is where we need the private sector. The possibility of crowd sourced data, open source software and national open data policies are an opportunity, not a threat: community involvement can be organised now.

At the same time, a number of initiatives are emerging that are based on the concept of democratising land rights through citizen empowerment and crowdsourcing, including Open Tenure in SOLA from UN-FAO, MapMyRights™ Foundation, the Cadasta foundation, the Rights and Resource Initiative, the Missing Maps Project and MappingforRights.

Looking at these trends we should be aware we have reached a unique momentum at which the objective of land rights for the world can be reached within one generations time. Based on the current level of technology and knowledge, steps can be taken that wouldn't have been possible a decade ago. Also the basic requirement of standards like LADM and STDM has been accomplished, which makes it possible to develop guidelines and methods like the VGGT and Fit for Purpose Land Administration. With the right tools and infrastructures we are now challenged to prepare cases and best practices in the world for the true implementation and setting up of land administration systems. Partnership, leadership and finance are perhaps still the most challenging aspects in order to make our ambitions come true.

4. GLOBAL INITIATIVES

The UN Post-2015 Development Agenda includes consideration of the land issue across a wide range of objectives. The UN Committee of Experts on Global Geospatial Information Management (UN-GGIM) guides the development of technology infrastructure to support land applications. UN FAO has initiated and developed the 'Voluntary Guidelines on the Responsible Governance of Tenure of Land, Fisheries and Forests in the Context of National Food Security' (VGGTs). The World Bank has started assessment of good practices in the land sector through the Land Governance Assessment Framework (LGAF). UN-Habitat's Continuum of Land Rights is now a widely accepted

The agenda for a Group of Experts on Land Administration and Management within the United Nations (8408)
Kees de Zeeuw (Netherlands), Cecille Blake (USA) and Mahashe Chaka (Lesotho)

FIG Working Week 2016
Recovery from Disaster
Christchurch, New Zealand, May 2–6, 2016

philosophy. This breakthrough in the perspective of land rights is implemented in current land tools, as well as in those under development by the Global Land Tool Network (GLTN).

Awareness, leadership and financing are crucial to implementing and maintaining land management systems. Coordination, collaboration and partnerships ask for a professional approach. The United Nations can play a vital role in this process.

Entities such as the African Union, World Bank, Food and Agriculture Organisation (FAO) and United Nations Human Settlement Programme (UN-Habitat), UNECE, UNECA and UNESCAP have been assiduously working towards ameliorating land tenure, land administration and management challenges. However the issues remain a global concern particularly in developing countries (UN GGIM, 2015).

Area of Work in Land Administration	FAO	FIG	UN Habitat	World Bank	UNECE
Land policy development	X	X	X	X	X
Conflict resolution			X		
Strengthening land governance arrangements			X		
Capacity Development	X	X	X	X	X
Institutional Strengthening	X		X	X	
Building and Implementation of LAS				X	
Assessment and monitoring of land governance		X		X	
Monitoring land issues and trends		X		X	
Drafting of land laws and policies					
Preparation and maintenance of cadastral maps				X	
Land registration projects				X	
Advocating & Implementing the Fit for Purpose Approach	X	X	X		

Figure 2. Area of work in Land Administration (UN GGIM, 2015).

5. UN GGIM

The United Nations Economic and Social Council (ECOSOC) established the United Nations Committee of Experts on Global Geospatial Information Management (UN-GGIM) in July 2011 (ECOSOC resolution 2011/24) as the official UN consultative mechanism on GGIM. UN-GGIM aims to play a leading role in setting the agenda for the development of global geospatial information and to promote its use to address key global challenges. It provides a forum to liaise and coordinate among Member States, and between Member States and international organizations.

The priorities and work programs of the Committee of Experts are driven by Member States. The Committee of Experts is mandated, among other tasks, to provide a platform for the development of effective strategies on how to build and strengthen national capacity on geospatial information, as

The agenda for a Group of Experts on Land Administration and Management within the United Nations (8408)
Kees de Zeeuw (Netherlands), Cecille Blake (USA) and Mahashe Chaka (Lesotho)

FIG Working Week 2016
Recovery from Disaster
Christchurch, New Zealand, May 2–6, 2016

well as disseminating best practices and experiences of national, regional and international bodies on geospatial information related to legal instruments, management models and technical standards.

5.1. UN-GGIM Operational Framework

The work of the UN-GGIM is coordinated by the Secretariat at its headquarters in New York and the substantive work done through a network of regional committees and their working groups.

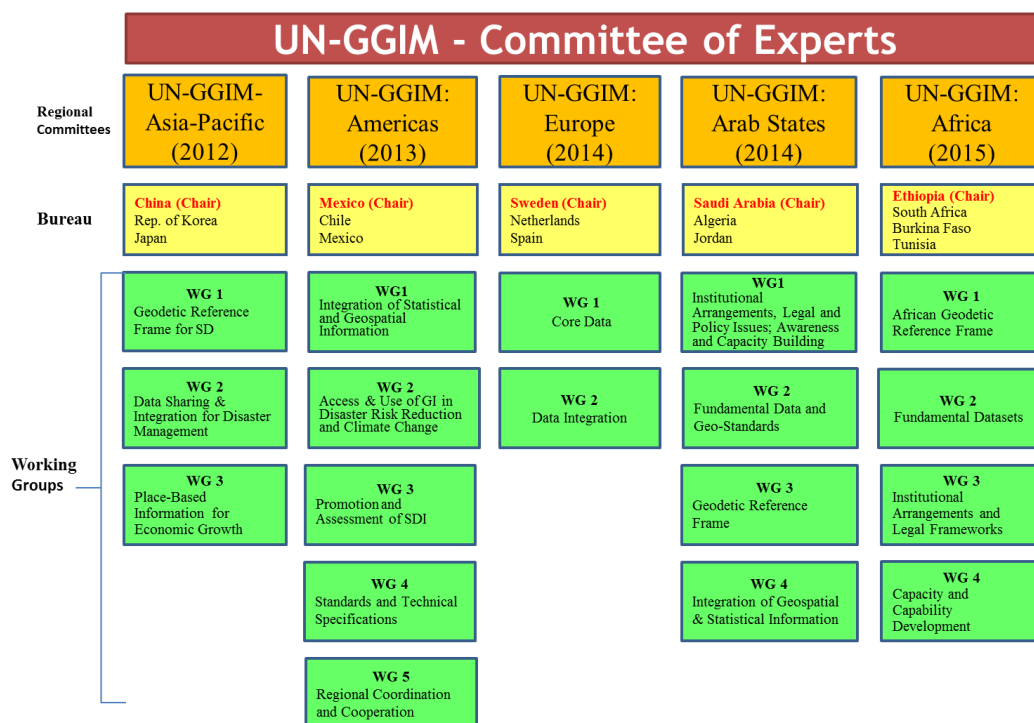


Figure 3. The structure of the Regional Committees of UN GGIM.

Each UN-GGIM regional entity plays a vital role liaising with the UN-GGIM Secretariat on topics of interest and major developments in intervening periods between meetings of the Committee of Experts, facilitating regional development and discussion, and formally feeding into the Committee of Experts. UN-mandated regional bodies are established in the Asia-Pacific, the Americas, the Arab States, Europe and Africa.

5.2. UN-GGIM Expert Groups and Working Groups

The working agenda for the UN-GGIM is further underpinned by the several Working Groups and two Expert Groups. These groups focus on progressing the work items and following up on decisions adopted at the annual session.

Expert Groups:

1. United Nations Expert Group on the Integration of Statistical and Geospatial Information

The agenda for a Group of Experts on Land Administration and Management within the United Nations (8408) Kees de Zeeuw (Netherlands), Cecille Blake (USA) and Mahashe Chaka (Lesotho)

2. The United Nations Expert Group on Land Administration and Management (UN-EG-LAM)

Working Groups:

1. Working Group on Global Geodetic Reference Frame
2. Working Group on Development of a Statement of Shared Principles for the Management of Geospatial Information
3. Working Group on Trends in National Institutional Arrangements in Geospatial Information Management
4. Working Group on Geospatial Information and Services for Disasters (WG-Disasters)

5.3. The United Nations Expert Group on Land Administration and Management (UN-EG-LAM)

During the fifth Expert Meeting in New York from August 5 – 7, 2015 the committee of experts endorsed the establishment of an Expert Group on Land Administration and Management (UN-EG-LAM) by decision 5/105. Based on this decision objectives, functions and activities have been defined for this Expert Group.

The major objectives of the Group of Experts are to:

- Play a leading role at the policy level by raising political awareness and highlighting the importance to decision makers of the need for timely and fit for purpose land administration and management and;
- Encourage the use of geospatial information tools and systems to improve the legal certainty of all citizens in the world with respect to the registration of the relation between people and land.

The functions of the United Nations Group of Experts will be to:

- Provide a forum for coordination and dialogue among global experts from the land administration and geospatial communities with a view to advance the activities related to the administration and management, and strengthening the use of geospatial information for good land governance;
- Propose work plans, informed by broad global consultation, to address the main areas of focus identified by Member states while ensuring that there are no overlaps or duplication with other initiatives;
- Address governance, data management, institutional and technology adoption and sustainability issues related to the implementation and management of efficient land administration and management systems, and transparent, functioning land markets and;
- Undertake work that is able to contribute to the Sustainable Development Goals of the UN indicator process and other areas as appropriate including, access to land, property rights, ownership, land degradation, rapid urbanization, and climate change, in coordination with other expert entities.

The agenda for a Group of Experts on Land Administration and Management within the United Nations (8408)
Kees de Zeeuw (Netherlands), Cecille Blake (USA) and Mahashe Chaka (Lesotho)

FIG Working Week 2016
Recovery from Disaster
Christchurch, New Zealand, May 2–6, 2016

To achieve these objectives, the United Nations Expert Group programme of work will focus on the following:

- Increase advocacy and raise political awareness for policy makers of pertinent land governance and management issues;
- Undertake activities that foster collaboration within the land management/governance and geospatial communities within the United Nations, and at national and international levels, including identification and addressing common issues of land management and governance in support of sustainable development;
- Take the leadership role in solving land administration issues with the focus on education, training and awareness, in addition to developing institutional capacity to implement the appropriate methodologies;
- Demonstrate the ‘fit for purpose’ approach by defining methodologies for different scenarios;
- Document, share and promote a variety of experiences/case studies showing the application of geospatial information to land administration;
- Examine existing land management tools and models and encourage use and access to facilitate the sharing of knowledge and experiences in their application;
- Explore the use of crowd sourcing and neighbourhood mapping to assist in assessments and;
- Emphasize the use and importance of a national cadastral map and geodetic framework as key contributors to land administration and a national spatial data infrastructure which supports other sectors – health, planning, infrastructure management, security and disaster management etc.

Actual and more detailed information on the Group of Experts can be found at the UN GGIM website: http://ggim.un.org/UN_EG_LAM.html.

6. FACILITATING COOPERATION AMONG LAND STAKEHOLDERS

It is foreseen that in order to address and change the man to land challenge collaboration, partnership and cooperation among the many stakeholders will be pivotal to the work of the UN-GGIM Group of Experts on Land Administration and Management. Partnership is “a collaborative relationship between entities to work toward shared objectives through a mutually agreed division of labour” (World Bank, 1998). Partnerships are inherently complex vehicles for the delivery of practical solutions on the ground and at the strategic level.

While partnerships and collaborative initiatives can be challenging, it is important to create and sustain the benefits to be derived clearly. In this instance the UN-GE-LAM intends to pursue its role through such arrangements as it is believed that collaborative ventures inure to:

- Stronger, advocacy and awareness raising, a key goal of the group of experts. It also Catalyses behaviour and policy change in addition to enhancing corporate social responsibility;
- Multiply the transformative potential, in this case increase the use of new innovative methods and approaches to land titling and registration;
- Greater efficiency and effectiveness;

The agenda for a Group of Experts on Land Administration and Management within the United Nations (8408)
Kees de Zeeuw (Netherlands), Cecille Blake (USA) and Mahashe Chaka (Lesotho)

- Strengthened and expanded knowledge base on land administration management, policies, legislation, practices, methodologies, technologies, systems, training and educational offerings etc.;
- New thoughts and innovation which are made more readily accessible.

UN-GE-LAM will adopt a double pronged strategic approach, one that is driven by global land administration issues, but is also Member State focused. UN-GGIM through DESA and UNSD will leverage its convening power to bring stakeholders together at the global, regional and local level. It will provide platforms for the articulation of land management issues, exchange of opinions and ideas and channel them into the policy process. It is believed that UN-GGIM has the means to foster greater alignment between global initiatives and national development strategies and to act as a conduit between local and national actors and in global policymaking processes.

7. CONCLUSIONS

In order to achieve the Sustainable Development Goals and to have legal certainty for all citizens in the world, good geospatial information management and sound land administration are considered important prerequisites. It is believed that the momentum is right for the challenging but feasible ambition to have land rights for the world.

During the fifth Expert Meeting of UN-GGIM in 2015, the Committee of Experts endorsed the establishment of an Expert Group on Land Administration and Management (UN-EG-LAM). This Expert Group fits within the global setting, global agenda and global initiatives, and can play an important role in facilitating the needed leadership. UN-GGIM can do this by coordinating the cooperation between the United Nations Member States, and to link to other global initiatives and organisations, including academia, NGO's and the private sector.

The objective UN-EG-LAM is to play a leading role at the policy level by raising awareness and to encourage the use of geospatial information management for land administration purposes. During the UN GGIM High Level Forum meeting In Addis Ababa (April 2016), this experts group is having its first meeting and discussion on their work plan and activities. The agenda for the coming years will be set. During the FIG working week in New Zealand the outcomes and findings of this first meeting will be presented.

REFERENCES

Enemark S., R. McLaren, C. Lemmen and K. Bell, 2014. Fit-For-Purpose Land Administration. FIG Publication No. 60 (World Bank /FIG).

ISO 19152:2012 Geographic information — Land Administration Domain Model (LADM), International Organization for Standardization, 2012.

The agenda for a Group of Experts on Land Administration and Management within the United Nations (8408)
Kees de Zeeuw (Netherlands), Cecille Blake (USA) and Mahashe Chaka (Lesotho)

FIG Working Week 2016
Recovery from Disaster
Christchurch, New Zealand, May 2–6, 2016

Lemmen C., R. Bennett, R. McLatren and S. Enemark, 2015. “A new era in Land Administration emerges. GIM International – April 2015”. <http://www.gim-international.com/content/article/a-new-era-in-land-administration-emerges>.

United Nations Committee of Experts on Global Geospatial Information Management, The application of geospatial information – land administration and management, 2015. (Version 3.1, 13 July 2015).

Williamson, I., Enemark, S. Wallace, J. and Rajabifard, A. 2010. Land Administration for Sustainable Development. Redlands. ESRI Press.

World Bank, Partnerships Group, Strategy and Resource Management, “Partnership for Development: Proposed Actions for the World Bank” (discussion paper, May 20, 1998), p. 5.

Zeeuw de, C.J. and C. Lemmen, 2015. Securing land right for the world. FIG Working Week 2015 “From the Wisdom of the Ages to the Challenges of the Modern World”. Sofia, Bulgaria, 17-21 May 2015.

BIOGRAPHICAL NOTES



Kees de Zeeuw is Director of Kadaster International at the Cadastre, Land Registry and Mapping Agency (Kadaster), The Netherlands and chair of the United Nations Group of Experts on Land Administration and Management (UN-GE-LAM). He holds an MSc degree in land and water management (1989). After long term contracts in Rwanda and Bolivia he has been working more than 10 years in environmental and geo-information sciences at Wageningen University and ResearchCentre. After being responsible at Kadaster for product and process innovation (2007 – 2010), he now is responsible for the coordination of Kadaster’s international activities and international cooperation projects. Kadaster International provides world wide advisory services in the domain of land administration, e-governance, geo-information services and SDI.



Cecille Blake is senior officer at the UN GGIM secretariat.



Mahashe Chaka is director general of the Land Administration Authority in Lesotho.

The agenda for a Group of Experts on Land Administration and Management within the United Nations (8408)
Kees de Zeeuw (Netherlands), Cecille Blake (USA) and Mahashe Chaka (Lesotho)

FIG Working Week 2016
Recovery from Disaster
Christchurch, New Zealand, May 2–6, 2016

CONTACTS

Ir. C.J. (Kees) de Zeeuw
Director Kadaster International
Cadastre, Land Registry and Mapping Agency (Kadaster)
P.O. Box 9046
7300 GH Apeldoorn
THE NETHERLANDS
Tel. +31 88 183 4417
Email: kees.dezeeuw@kadaster.nl
Web site: www.kadaster.nl

The agenda for a Group of Experts on Land Administration and Management within the United Nations (8408)
Kees de Zeeuw (Netherlands), Cecille Blake (USA) and Mahashe Chaka (Lesotho)

FIG Working Week 2016
Recovery from Disaster
Christchurch, New Zealand, May 2–6, 2016