

*Presented at the FIG Congress 2018,
May 6-11, 2018 in Istanbul, Turkey*

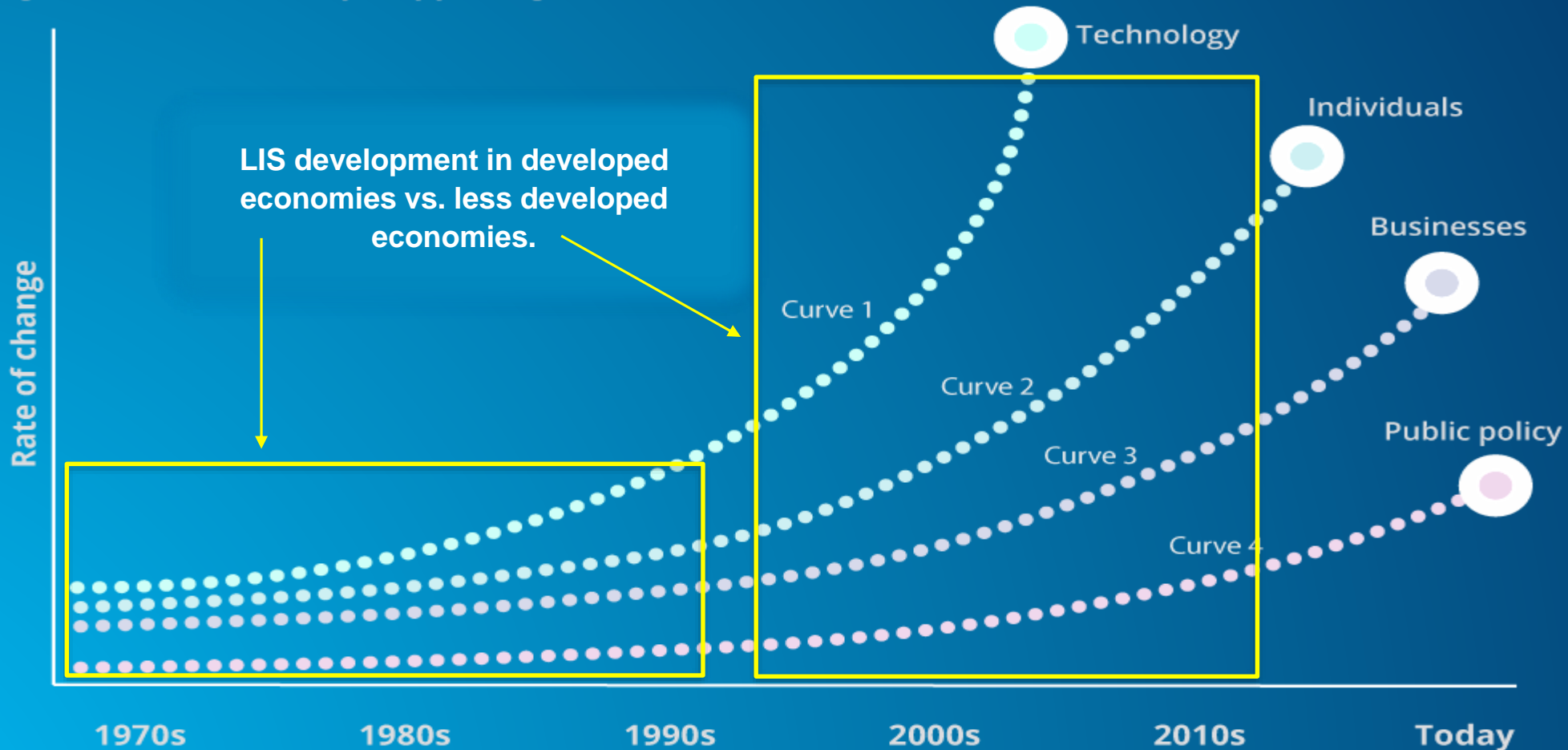
Using Scalable Technology Platforms to Deliver Fit-for-Purpose Land Administration

Timothy Fella

Esri

Technological Change and Ability to Adapt

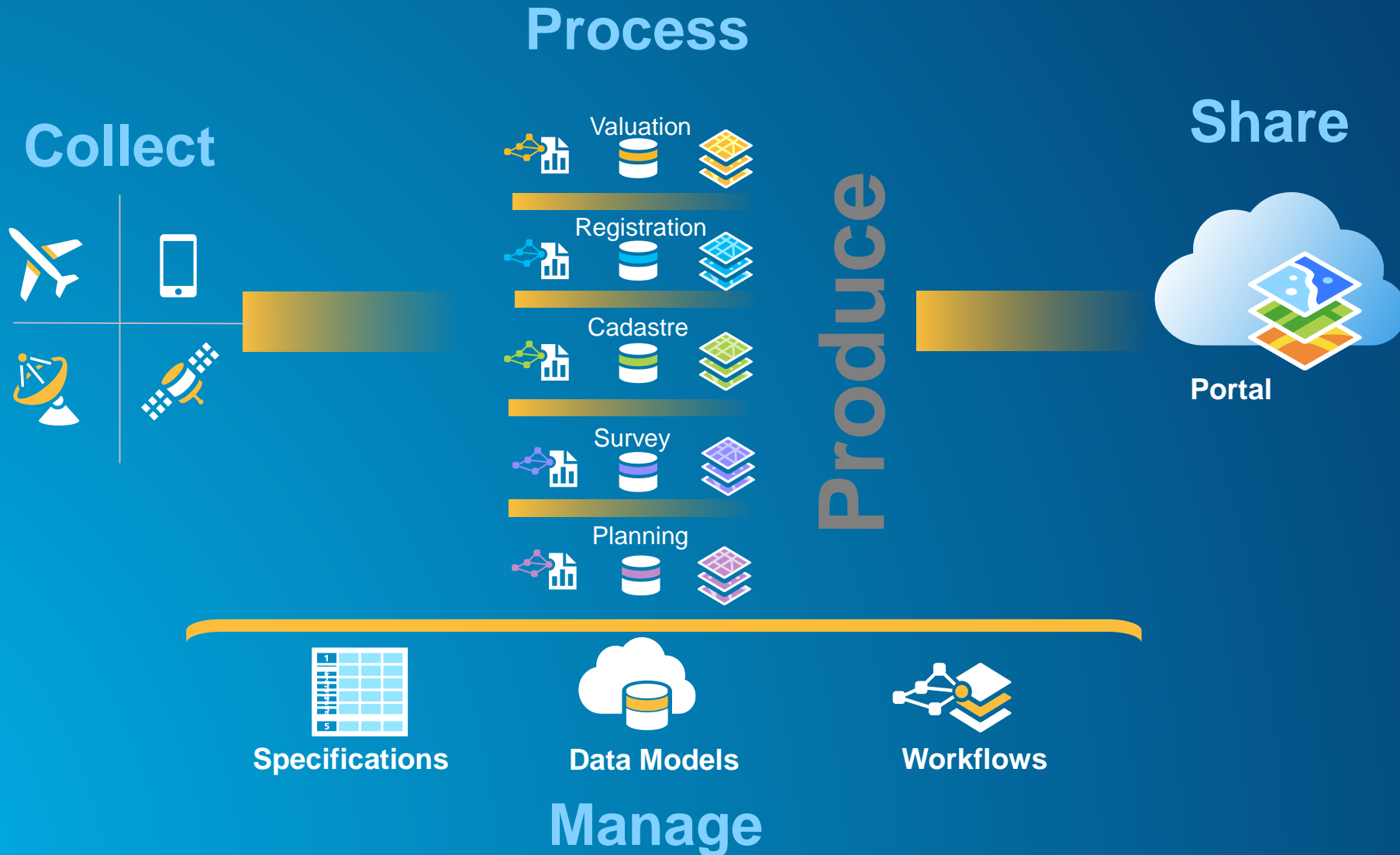
Figure 2. What is *really* happening



What is Fit-for-Purpose Land Administration?

- **Flexible** in the spatial data capture approaches to provide for varying use and occupation.
- **Inclusive** in scope to cover all tenure and all land.
- **Participatory** in approach to data capture and use to ensure community support.
- **Affordable** for the government to establish and operate, and for society to use.
- **Reliable** in terms of information that is authoritative and up-to-date.
- **Attainable** in relation to establishing the system within a short timeframe and within available resources.
- **Upgradeable** with regard to incremental upgrading and improvement over time in response to social and legal needs and emerging economic opportunities.

Land Administration Functions



Land Administration Community's Response

Functional Requirements



- Open-source mobile data collection tools

Drawbacks:

- Limited functionality
- No scalability
- No data editing and management capabilities
- Requires customization for each locale

- Commercial Off-the-Shelf (COTS) Solution

Drawbacks:

- Unique requirements may be missing
- System not owned by customer
- Dependent on vendor and licensing costs

- Highly Customized Systems with Unique Requirements

Drawbacks:

- Longer to develop & deploy
- Increased business risk
- Higher total cost of ownership
- Static System; not easily upgradeable
- Difficult to maintain

Fit-for-Purpose: Comparing COTS vs. Custom

Fit-for-Purpose Attributes		COTS		Custom
Reliable	+	Tested internally and by thousands of customers every day	-	Thorough testing requires huge investment of time and capital
Flexible in Terms of Spatial Data Capture Approaches	+	Yes	+	Yes
Inclusive of All Tenure Types	+	Yes	+	Yes
Participatory in Approach to Data Capture & Community Support	+	Yes	+	Yes
Affordable to Establish & Operate (Total Cost of Ownership)	+	Usually less expensive to acquire and maintain	-	Usually more expensive to create, test, debug, secure and maintain
Quick to Deploy	+	Shorter time to deliver	-	Longer time to deliver
Upgradeable	+	Evolving system with COTS releases and updates	-	Requires coding and services to upgrade/migrate

Upgradeable, Scalable & Modular

3. Full Enterprise Production

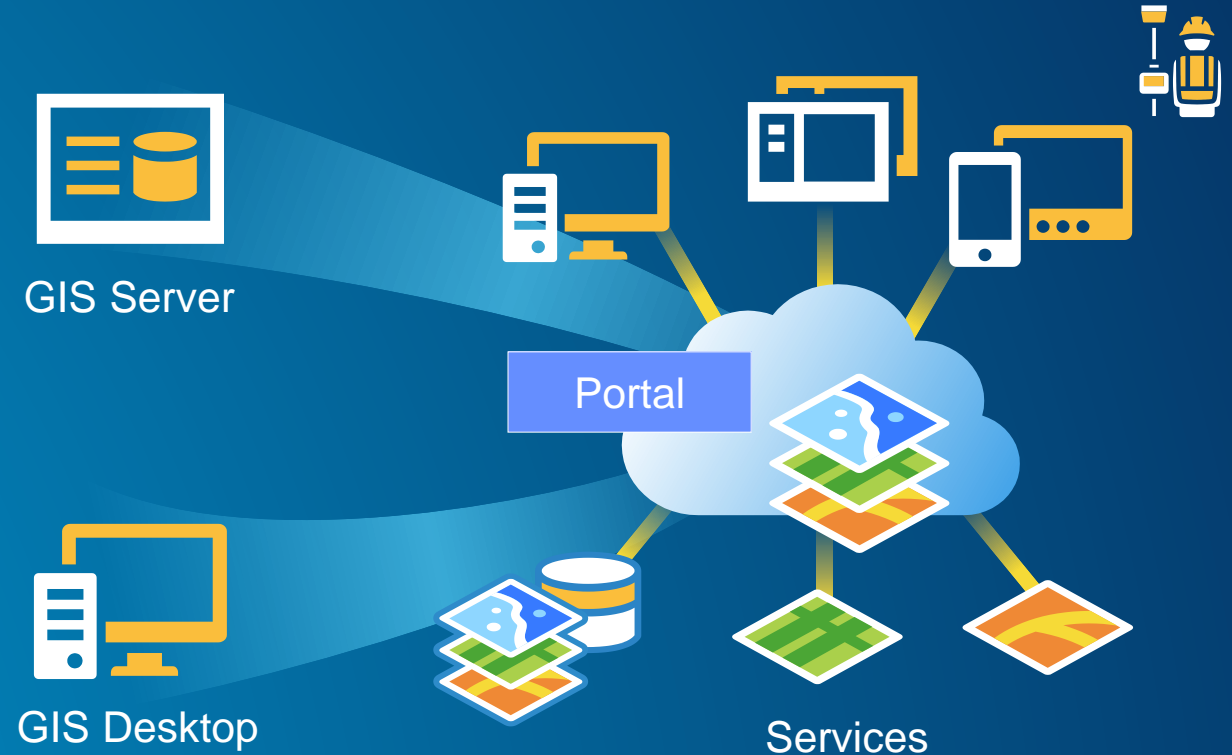
- ArcGIS Enterprise & Portal
- Parcel editing solution
- AGOL and ready to use content
- COTS Apps

2. Simple Desktop, Small Department

- Parcel editing solution
- AGOL and ready to use content
- COTS Apps

1. Getting Online – Fit-for-Purpose

- AGOL and ready to use content
- COTS Apps



What is Web GIS?

Foundation of a modern GIS

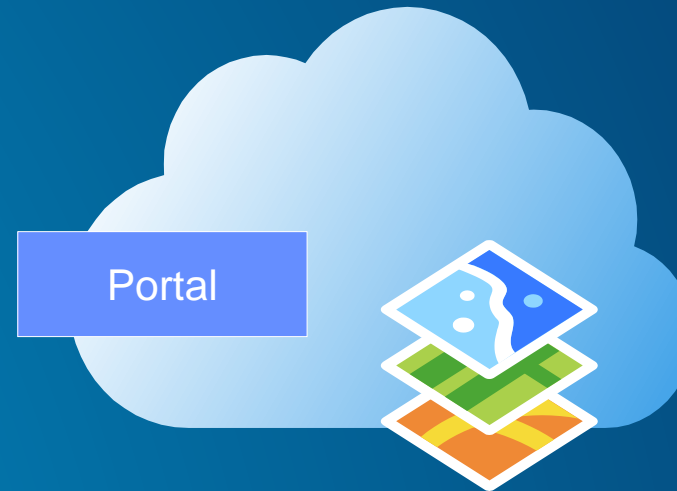
- A pattern, or architectural approach
- Based upon services
- Supports Identity
- Cloud, on premises, or both
- Uses a Portal



A Portal is an essential component

Of a modern GIS

- Framework for managing content
 - Discover, share, and use content
- Manages users
 - Identity, roles, collaboration
- Supports a sharing model
 - Users, groups, privileges
- Supports a geoinformation model
 - Web maps, layers, scenes
- Hosted in the Cloud (ArcGIS Online)
- Hosted on-premises (Portal for ArcGIS)

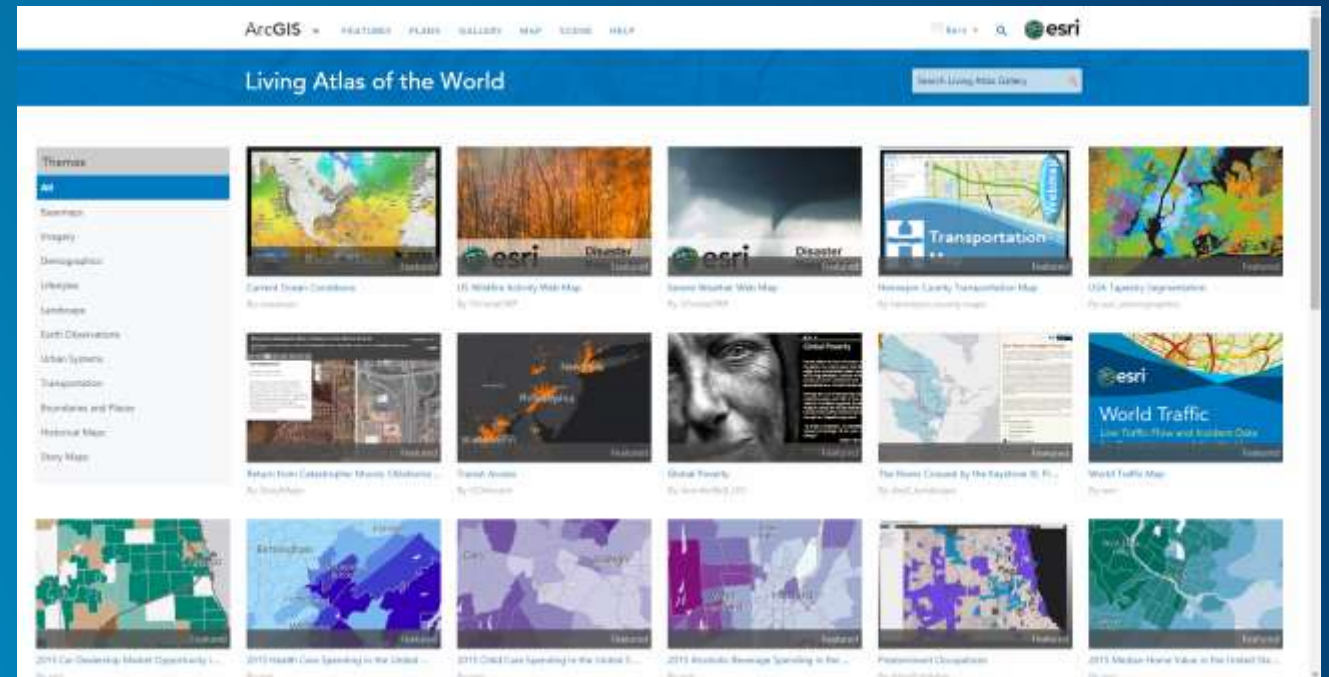


Content

GIS Content

Living Atlas

- Basemaps
- Demographics and Lifestyle
- Transportation
- Urban Systems
- Earth Observations
- Imagery
- Landscape
- More...

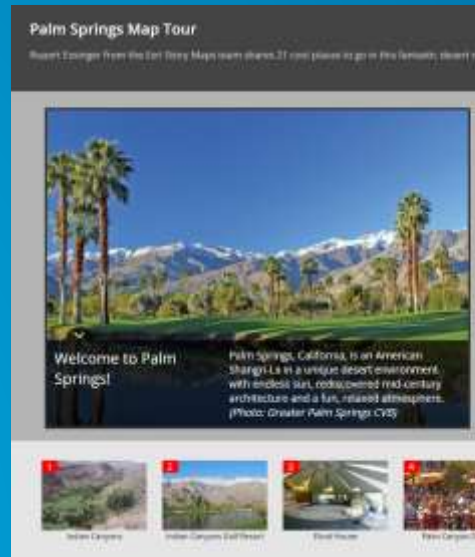


Apps

GIS Apps

Configurable, Hosted, no programming required

- Configurable app gallery
- Web AppBuilder
- AppStudio

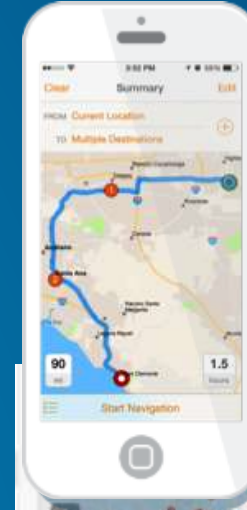
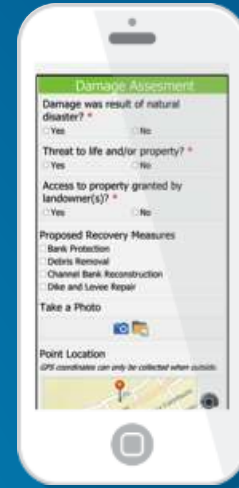


Apps

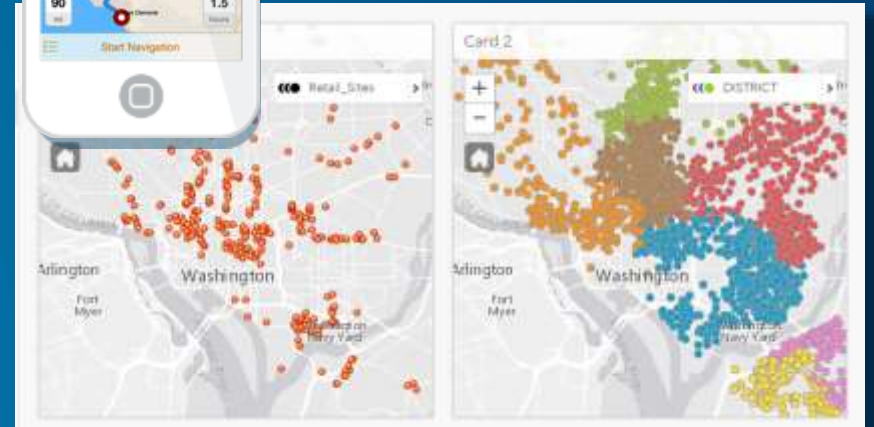
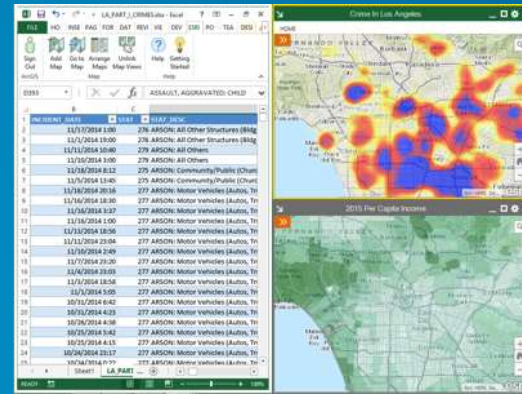
GIS Apps

Support your workforce and workflows

- Maps for Office
- Collector
- Operations Dashboard
- Open Data
- Navigator
- Workforce Manager
- Drone2Map
- Insights
- Earth



Maps for Office



Insights

ArcGIS Online

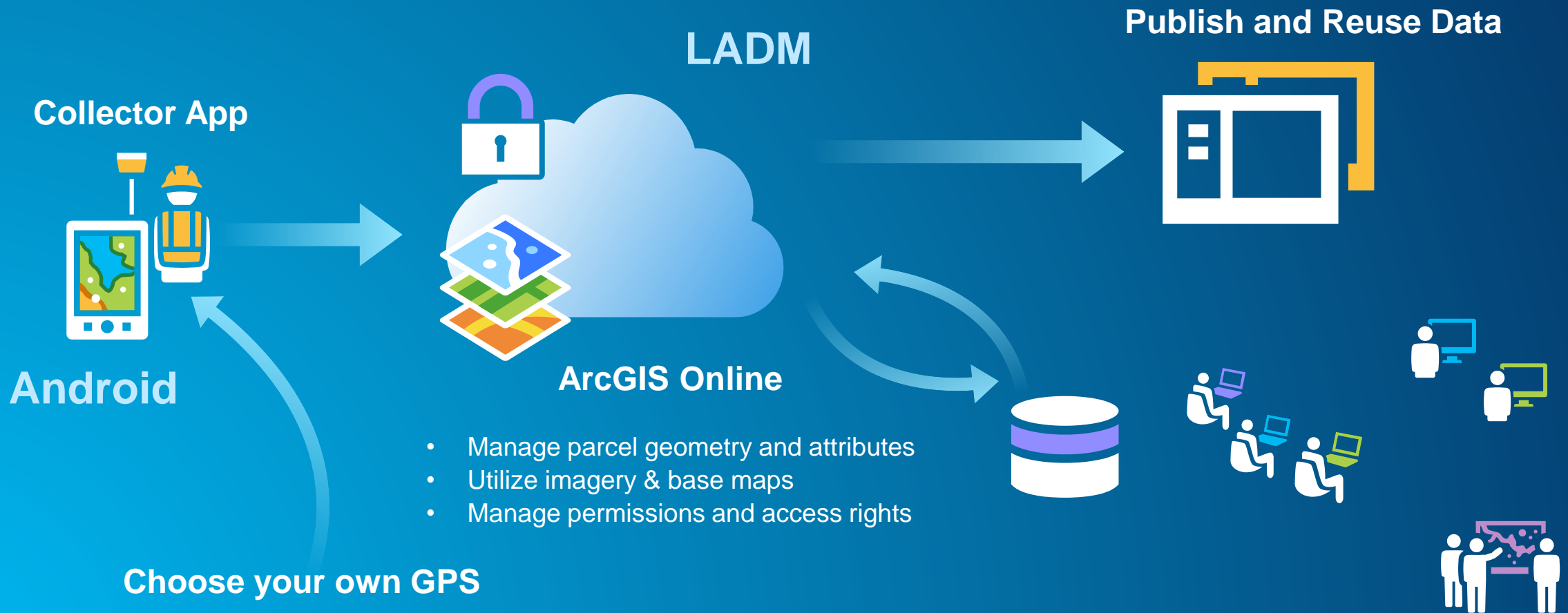
Cloud-based Web GIS

- Administration and security
- Hosted maps, publishing and analytics
- Hosted apps
- Hosted content (Living Atlas)
- Sharing and collaboration
- Integration with on-premises Web GIS



ArcGIS Delivers Fit-for-Purpose Land Administration

COTS and configurable



Why this Approach?

Fit-for-purpose and fit-for-the-future in a couple of weeks.....

- Fast-to-Implement
- Scalable
- Low Cost
- Reliable
- No Software Development
- Secure
- Leverages External Data
- Accurate
- Future Proof
- Standards-based
- Repeatable
- Works Disconnected

Land Administration Modernization Program

Esri Land Administration Modernization Program

- **72 countries eligible**
- **Legally mandated cadastral organizations**
- **Full Esri platform**
- **4 year program**
- **Perpetual licenses**
- **Small annual administrative fee (\$10k per year)**

Land Administration Modernization Program

Overview Eligibility [Apply Now](#)

Land Administration Modernization Program

Providing GIS tools & training for resource constrained countries

0.65%

0.12%

0.04%

0.65%

0.65%

0.65%

Questions?

tfella@esri.com