

# Morphometric Analysis of Delta State River Niger Basin in Nigeria Using Remote Sensing and GIS

*AHUCHAOGU UDO. E<sup>1</sup>, OJINNAKA OLIVER. C.<sup>2</sup>, AKAJIAKU. C. CHUKWUOCHA<sup>3</sup>  
BAYWOOD CECILIAR .N<sup>4</sup>(Nigeria)*

<sup>1,3,4</sup>Department Of Surveying And Geo-Informatics Federal University Of Technology Owerri

<sup>2</sup>.Department of Geo-informatics, And Surveying, University of Nigeria, Enugu Campus

Corresponding Author; Ahuchaogu Udo Emmanuel. ( email: [udoemmy@yahoo.co.uk](mailto:udoemmy@yahoo.co.uk) ),

Mobile NO; (08035656394)

## ABSTRACT

In contemporary times, the pace of climatic changes is increasing in alarming rate therefore the need to adopt the most reliable technologies to monitor and sustain our environments. Technology involving the integration of geographical information system (GIS) and remote sensing technique has proved to be reliable in solving problems in geospatial space. Therefore the aim of this paper is to demonstrate the potential of Remote Sensing (RS) and Geographic Information System (GIS) techniques for characterization of Morphometric attributes of Delta state river Niger basin in Nigeria. Basic terrain and hydrological parameters such as slope aspect, 3-D Land scape, sub-catchments, flow direction, channel networks, drainage density, stream orders, stream frequency etc has been processed using Advance space borne thermal emission and reflection Data (ASTER DEM) in GIS environment. Ground truthing and accuracy assessment has been carried out to ensure the reliability of the result. Based on Strahler's method of stream ordering, the river basin is designated as 4th order basin, with 1<sup>st</sup> order streams mostly dominating. The overall stream network revealed a hierarchy of 1<sup>st</sup>, 2<sup>nd</sup>, 3<sup>rd</sup> order streams with river Niger positioned as 4<sup>th</sup> order streams in the hierarchy. This study reveals a total number of 123 streams draining an area of 17530square kilometers of land. The total sum of the lengths of the streams and rivers measured 2907.33kilometers giving rises to a drainage density of 0.1659km<sup>-1</sup>. It further revealed that there are ninety six (96) first order streams, twenty(20) second order streams and seven (7)third order streams within the basin. Further investigation revealed that the basin has circulatory ratio of 0.4, stream frequency of  $7.017 \times 10^{-3}$ , Form factor of 0.154, basin length of 337.60km and bifurcation ratio between the range of 4.75 to 5.0. These digital derivatives are essential for the proper management of the river basin and also attest that Remote Sensing and GIS can be effectively utilized as a viable tool to study river basins and their associated morphometry.

**Key words;** River Basin, Morphometry, Remote Sensing, GIS,

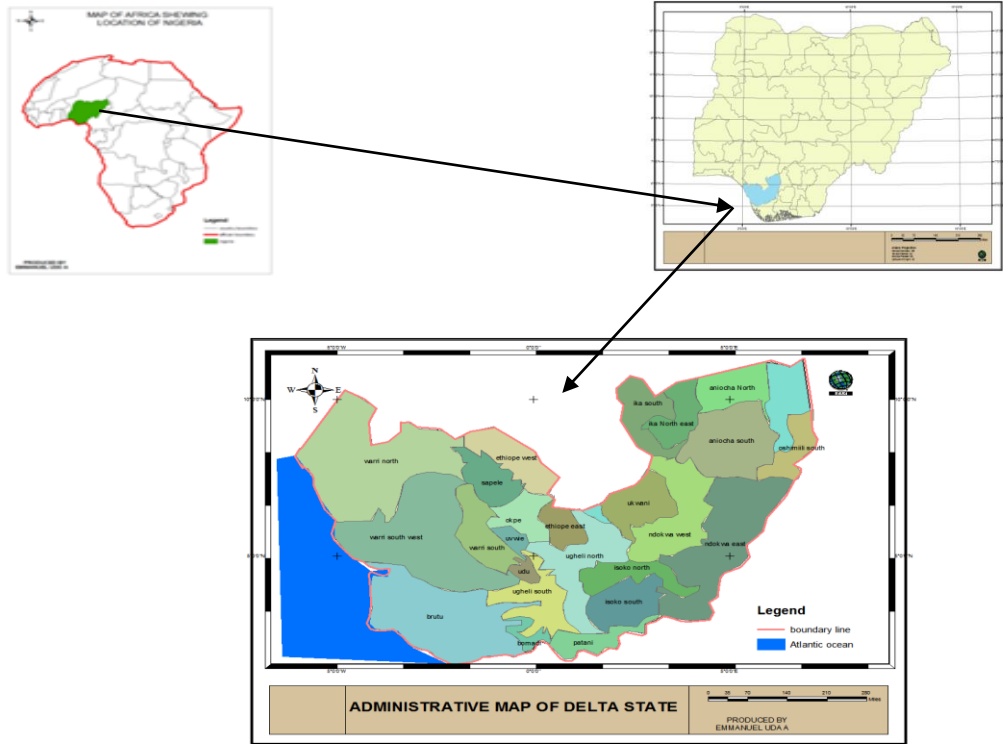
## 1.0 INTRODUCTION

In contemporary times, the pace of climatic changes is increasing in alarming rate. Conservation of natural resources is of prime importance for sustainable development and to mitigate the demand and supply gap between resources (Sangeetha et.al 2019). Therefore there is need to adopt state-of-the-art technologies to monitor and sustain our environments. Geographical information system (GIS) and remote sensing technique has proved to be reliable in solving verities of problems in geographic space. In this study, attempt has been made to characterize morphometric attributes of Delta state river Niger basin using remote sensing and GIS. Morphometry is the measurement and mathematical analysis of the configuration of the earth's surface, shape and dimension of its landforms (Clarke 1996; Agarwal 1998; Obi Reddy et al. 2002; Praveen et al 2017). Good understanding of morphometric attributes of a drainage basin is invaluable for watershed management. Watershed management is the process of formulating and carrying out a course of action involving manipulation of the natural system of watershed to achieve specified objectives (Amulya et al 2018). It includes all the activities taken for proper use of all land and water resources of a watershed for optimum production with minimum hazard to natural resources. Studies on river and stream ordering systems abound all over the world as a result of the relevance of water to the sustenance of life (Abiodun et'al 2018). Morphometric analysis of a drainage basin is a quantitative description of a basin and an important aspect to know the character of the basin (Strahler AN 1964). Morphometric parameters define the topographical, geological and hydrological condition of a basin (Angillieri 2012; Kabite and Gessesse 2018.; Madavi and Anshumali 2019), It is important in any hydrological investigation like assessment of ground and surface water potential, assessment of flood and erosion propensity, groundwater management, basin management and environmental assessment (Praveen et al 2014). It is well established that the influence of drainage morphometry is very significant in understanding the landform processes, soil physical properties and erosional characteristics). Digital Elevation Model (DEM) in the field of GIS provides the three dimension evaluation of the earth surface. Advanced Space borne Thermal Emission and Reflection Radiometer (ASTER) and Shuttle Radar Topographic Mission (SRTM) provide the data of DEM and are very useful for hydrological analysis and extraction of stream network of a drainage basin (Sumantra 2016).

### 1.2 Study Area:

Delta state is one of the oil producing state in Nigeria located in the south-south geo-political zone in the region known as Niger Delta. It has a population of 4098391 comprising of 2074306 males and 2024085 females base on 2016 population census. The State presently cover a land mass of 17530km<sup>2</sup> and is bounded in the North by Edo State, the east by Anambra state, south east by Bayelsa State. Geographically it is located between latitude 5<sup>0</sup> 00' and 6<sup>0</sup> 30' and between longitude 5<sup>0</sup> 00' and 7<sup>0</sup> 00'. Delta State is generally low lying without remarkable hills and has a wide coastal belt interface with rivulets and streams which forms part of the Niger Delta. Nigeria comprised seven relief regions based on land units or common land form assemblage these are listed as follows; (a) the creeks and lagoons, (b) the Niger Delta, (c) the coasted plane, (d) the

river basin trough, (e) the inselberg landscapes, (f) the chad basin and (e) the eastern high lands. Delta state fall in the region a, b, and c. These regions are partly wetlands with estuarine of Benin Rivers, Escarvos River, Forcodaos river with river Niger Bifurcation draining larger part of the state. The presence of Raros, Focardos and Escarvos rivers and river Niger render delta state prone to high annual rainfall and the areas of high rainfall are the area high flood impact



**Fig 1 Location Map of The Study Area**  
(Source; Authors analysis)

## 2.0 MATERIAL AND METHODS

In this study, Advance space borne thermal emission and reflection Data (ASTER DEM) of one arc second (30m resolution) covering the study area was utilized. This dataset is originally, georeferenced into the horizontal datum of WGS84 and then it is referenced into the vertical datum of EGM96 geoids. Other datasets includes Catchment map of Nigeria, and political map of the catchment area. software used is Arc-GIS version 10.4

## 2.1 Methodology

Manual extraction of drainage network and assigning the stream order is a time taking tedious exercise. To overcome this problem, automatic extraction techniques have been used for evaluating the morphometric parameters of the basin, i.e., extraction of River basin/watershed boundary and extraction of drainage/stream network of Delta state River Niger basin. The Digital elevation model is the first input for morphometric analysis. The tiles of the elevation raster (DEM) has been mosaicked using data management function of Arc-tool box in ArcGIS 10.4 and the generated data was transformed from geographic coordinate system to projected coordinate system World Mercator. To ascertain compatibility, the catchment map of Nigeria, and political map of the catchment area were georeferenced to WGS1984 World Mercator. The shape-file of the basin was extracted from the Nigeria political catchment map through digitizing and was used to clip out the study area from the DEM to actual boundary limit and shape. The clipped raster was used for surface analysis, hydrological analysis, linear and areal aspects of morphometric analysis

## 2.2 Extraction of drainage network

The drainage network of the basin was extracted from series of geo-processing tools in hydrology extension of Arc GIS 10.4. The output of this method is a basis for extracting stream features. The depression in the DEM was filled using the fill tool and was used to create the flow direction grid of the Basin. Flow direction grid holds values in its cells that indicate the direction of the steepest descent from each cell. This value determines the direction water will flow from each cell based on the underlying topography of the landscape. Flow direction grid is fundamental to the generation of flow accumulation grid. Flow accumulation grid is important because it identifies cells of high flow where streams and channels are to be expected. In other wards each cell in the flow accumulation grid contains a value that is determined by the number of upstream cells flowing into it. The Flow Accumulation Grid was processed to create the Stream Definition Grid. A threshold of the volume of flow (number of accumulating cells) that defines a stream in the project area was set. This helped in proper definition of the stream segments. The idea here is that the grid cells that accumulate runoff from a specified number of cells are considered to be the stream (flow route) cells. Strahler's system of classification designates a segment with no tributaries as a first-order stream. Where two first-order stream segments join, they form a second-order stream segment and so on. The sum of the length, and total number of the streams (linear aspect) were calculated with the help calculate geometry module of Arc GIS 10.4

## 2.3 Drainage density

This is the ratio of total stream length in a given basin to the total area of the basin. It is a measure of how well or poorly watershed is drained by stream channels Horton (1932) reported that the value of the drainage density ranges from  $0.93\text{km}^{-1}$  to  $1.24\text{ km}^{-1}$  in the steep impervious area of the high precipitation region and zero for the permeable basin with high infiltration rate.

Drainage density is related to various features of landscape dissection such as valley density, channel head source area, relief, climate and vegetation (Moglen et al. 1998; Praveen et al 2017), soil and rock properties (Kelson and Wells 1989; Praveen et al 2017). The area of the basin and the total length of the streams and rivers in the basin has been calculated using Calculate geometry module of ArcGIS10.4 and the drainage density has been calculated using the formula;  $L_u/A$

#### **2.4 Circulatory ratio (Rc)**

Miller (1953) appraised that circularity ratio is the ratio of the area of the basins to the area of circle having the same circumference as the perimeter of the basin. It is a dimensionless parameter which provides a quantitative index of the shape of the basin (Jha VC (1996). Circular basin has a maximum efficiency of the movement of runoff, whereas an elongated basin has the least efficiency. This parameter is very significant in forecasting drainage discharge, particularly in a time of the flood. In this study Circulatory ratio was computer using the formula;  $R_c = 4\pi A/P^2$

#### **2.5 Stream frequency (Fs):**

Horton (1932) defined stream frequency as the ratio of total number of channels cumulated for all orders within a given drainage basin and the area of that drainage basin. Reddy et al. (2004) reported that low values of stream frequency (Fs) indicate presence of a permeable subsurface material and low relief. The area of Delta river Niger basing and the total number of streams and rivers in the basin have been measured using Calculate geometry tool in GIS environment. These datasets were combined to compute the drainage density of the basin using the formula;  $F_s = N_u/A$

#### **2.4 Form factor**

This is defined as the ratio of the basin area to the square of the basin length. It is dimensionless quantity which is used to describe the different shape of basin. The basins with high form factors portrays high peak flows of shorter duration, whereas, elongated drainage basin with low form factors depicts lower peak flow of longer duration (R. E. Horton,1945; Sayeed et'al 2017). The value of the form factor varies from 0 (highly elongated shape) to the unity, i.e., 1 (perfect circular shape). In this study Form factor has been computed using the formula;  $F_f = A/L^2$

#### **2.5 Bifurcation ratio (Rb)**

The Bifurcation ratio may be defined as the ratio between the numbers of stream segments of any given order to the number of the next higher order. If Rb of a river basin is low ,there is a higher chance of flooding, as the water will be concentrated in one channel rather than spread out (Sayeed et'al 2017). In line with the above definition, bifurcation ratio has been calculated using the formular;  $R_b = N_u/N_{u+1}$

### 3.0 RESULT AND DISCUSSION

In line with the purpose of this study, ASTER-DEM was used in GIS platform to characterize the morphometric attribute of Delta river Niger basin. Figure 2 is the drainage network of the basin and fig 3 is drainage order map of the basin. Figure4 is sub-catchment map of the Basin and figure5 is the Aspect map of the basin. Figure6 is the slope map of the basin. Figure7 is overlay analysis of flow vectors on 3-D surface model of the study area. Table 1 is the morphometric attributes of the basin

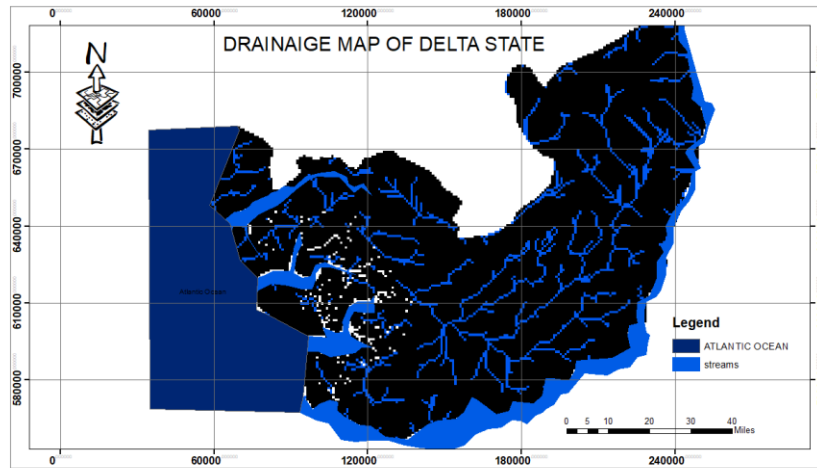


Fig2 Drainage map of the study area

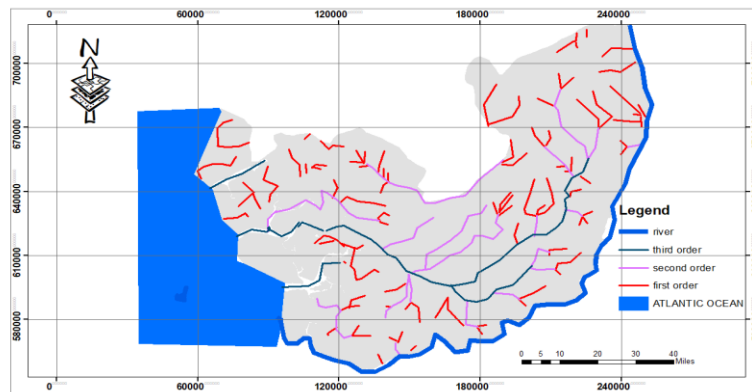


Fig3 Stream order map of the study area

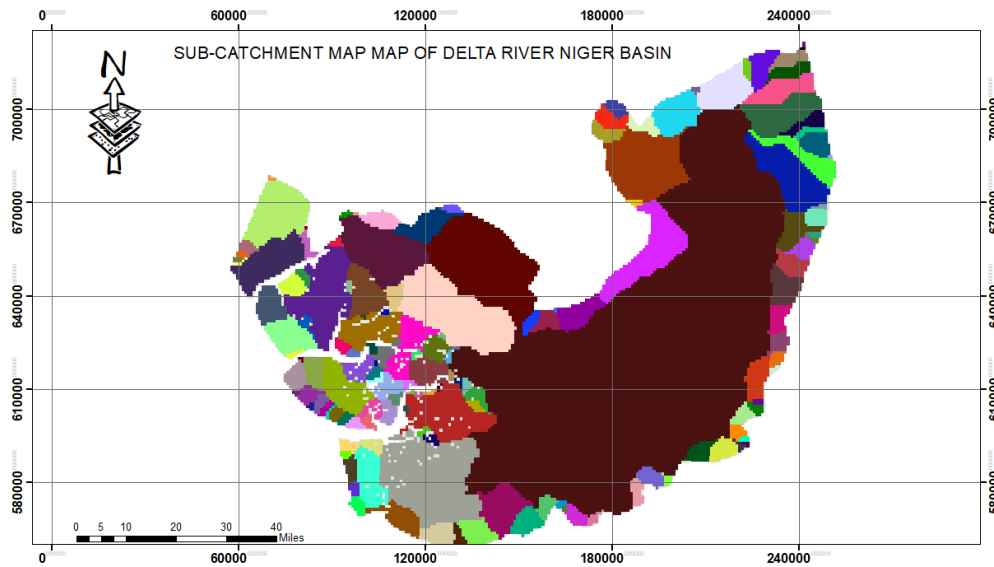


Fig4 Sub-catchment map of the study area

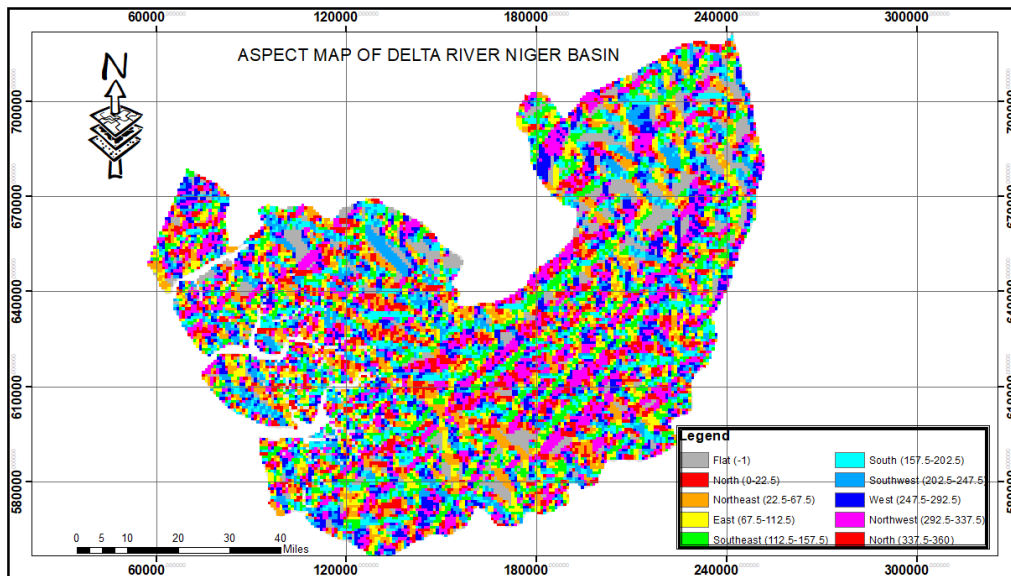


FIG5 Aspect map of the study area

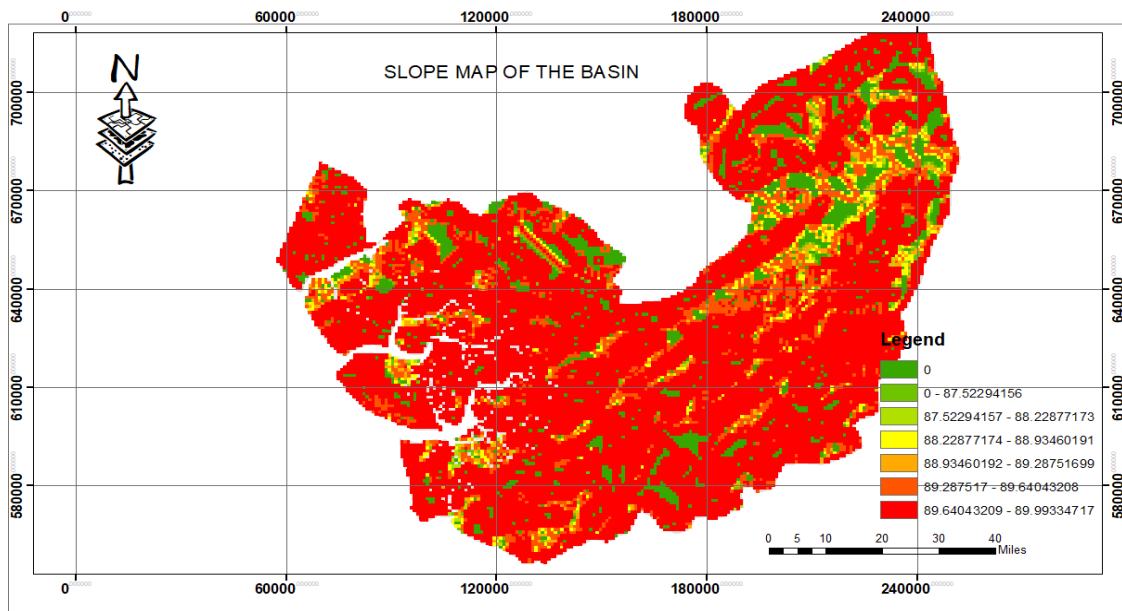


Fig6 Slope map of the study area

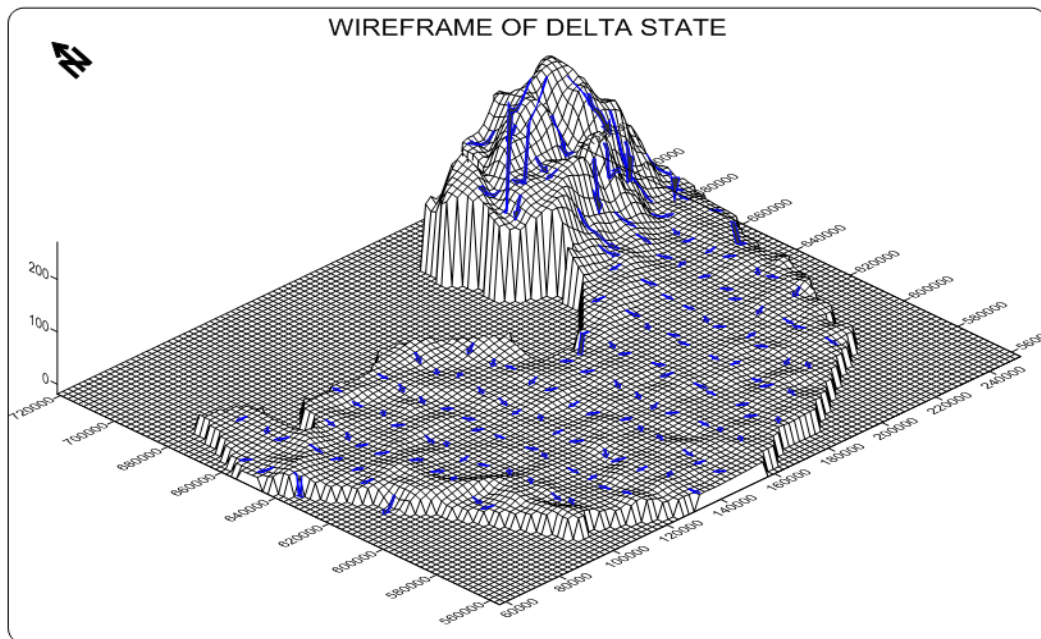


Fig7 Over Lay Analysis of Flow Vector And 3-D Surface Map Of The Study Area



Table 1 morphometric attributes of Delta state river Niger basin

PARAMETER	FORMULAR			DIMENSION
Basin Area	GIS Analysis/DEM			2907.33kilometers
Basin Length	GIS Analysis/DEM			337.60km
Drainage Density	$D = \Sigma Lu / Au$			$0.1659 \text{ km}^{-1}$
Stream Frequency	$F = \Sigma Nu / Au$			$7.017 \times 10^{-3}$
Circulatory Ratio	$Rc = 4PIA / P$			0.4,
Form Factor	$Ff = A / LP^2$			0.154
STREAM OEDER	STREAM NUMBER	STREAM LENGHT	BIFURCATION RATIO	STREAM LENGTH RATIO
1	96	849	4.80	
2	20	499	2.86	0.59
3	7	244		0.49

### 3.1 Discussion of Results

Based on Strahler's method of stream ordering, the river basin is designated as 4th order basin, with 1<sup>st</sup> order streams mostly dominating. The overall stream network revealed a hierarchy of 1<sup>st</sup>, 2<sup>nd</sup>, 3<sup>rd</sup> order streams with river Niger positioned as 4<sup>th</sup> order streams in the hierarchy. This study reveals a total number of 123 streams draining an area of 17530square kilometers of land. The total sum of the lengths of the streams and rivers measured 2907.33kilometers giving rises to a drainage density of  $0.1659 \text{ km}^{-1}$ . It further revealed that there are ninety-six (96) first order streams, nineteen (20) second order streams and four (7) third order streams within the basin. Sub-catchment map is invaluable for investigation of source of stream pollution, this study reveal a total of 157 sub-catchment maps within the basin. The largest and smallest basin measures approximately 1 square kilometer and 7997 square kilometers respective

### 3.2 Aspect and slope

Aspect (Fig4) depicts the slope direction and is measured clockwise from  $0^\circ$  to  $360^\circ$ . This is a crucial step in hydrological modeling as the direction of flow will determine the ultimate destination of the water flowing across the surface of the land. The aspect of a slope can make very significant influences on its local climate because the sun's rays are in the west at the hottest time of day in the afternoon, and so in most cases a west-facing slope will be warmer than sheltered east-facing slope. This can have major effects on the distribution of vegetation in the watershed (Praveen et'al).

### 3.3 3-D Surface Analysis

Fig7 revealed 3-D surface model of the basin. The surface analysis revealed undulating high land on the northern part of the study area with the elevation decreasing sharply towards the

southern part of the basin. It also show that the direction of surface runoff from precipitated water also projects towards the southern part following the landscape pattern. These attributes are invaluable in identifying areas prone to flood, assessment of discharge potential of the basin, estimation of areas of surface and ground water potentials for environmental planning

### **3.4 Drainage density and Stream frequency.**

These attributes shows how well a basin is drained by streams and can be use to assess the topographical and hydrological condition of the watershed. The drainage density and stream frequency of the basin are  $0.1659\text{km}^{-1}$  and  $7.017 \times 10^{-3}$  respectively. These characteristics indicate coarse drainage texture. This shows that the basin is made of permeable subsurface materials with low runoff and erosion potential. Other attributes such as basin area, basin perimeter, basin length, stream number, stream length, stream length ratio and bifurcation ratio are summarized in table1. These morphometric attributes are invaluable for watershed management in the study area

## **4.0 CONCLUSION**

In contemporary times, the pace of climatic changes is increasing in alarming rate therefore the need to adopt the most reliable technologies to monitor and sustain our environments. Morphometric analysis of drainage system is prerequisite to watershed management. Morphometric descriptors represent the relatively simple approaches to describe the drainage basin processes. It is used to compare basin characteristics and enable understanding of geological geomorphic and hydrological history of the drainage basin. In this study, Remote sensing satellite data (ASTER-DEM) and GIS tools has been employed to evaluate quantitative attributes of Delta state river Niger basin. It is inferred that the basin falls under 4th order basin and is dominated by lower order streams. Other morphometric attributes of the basin (table1) suggest that it is made of permeable subsurface materials with low runoff and erosion potential. These attributes attests the reliability of GIS and remote sensing data in morphometric assessment of a river basin.

## **REFERENCES**

1. Abiodun et'al (2018), Drainage Basin Morphology And Terrain Analysis Of The Lower Benue River Basin, Nigeria. Science World Journal 13(1) pp18-22
2. Amulya et' al (2018), Morphometric Analysis of Bettahalasuru Using Gis And Remote Sensing. International Journal of Applied and Advanced Scientific Research 3, (1), pp 12-16
3. Angillieri MYE (2012), Morphometric characterization of the Carrizal basin applied to the evaluation of flash floods hazard, San Juan, Argentina. Quat Int 253:74–79

4. Clarke JI (1996), *Morphometry from Maps. Essays in geomorphology*. Elsevier publication. Co., New York, pp 235–274
5. Horton, R.E. (1932) Drainage basin characteristics. *Trans. Amer. Geophys. Union*, v.13, pp.350–360. Cross Ref Google Scholar
6. Jha VC (1996), *Geomorphology Study of Himalayan Ramganga Basin Jaipur and New Delhi*: Rawat Publication
7. Kabite G, Gessesse B (2018), Hydro-geomorphological characterization of Dhidhessa River Basin, Ethiopia. *Int Soil Water Conserv* 6(2):175–183
8. Kelson KI, Wells SG (1989), Geologic influences on fluvial hydrology and bed load transport in small mountainous watersheds, northern New Mexico, USA. *Earth Surf Process* 14:671–690
9. Madavi ·and Anshumali (2019), A GIS-based assessment of recent changes in drainage and morphometry of Betwa River basin and sub-basins, Central India. *Applied Water Science* 9 (157 ) pp1-12 <https://doi.org/10.1007/s13201-019-1033-6>
10. Moglen G.E, Eltahir E.A, Bras R.L (1998), On the sensitivity of drainage density to climate change. *Water Resources Res* 34:855
11. Miller VC (1953), A quantitative geomorphologic study of drainage basin characteristics in the Clinch Mountain area, Virginia and Tennessee, Project NR 389042, Tech Report 3. Columbia University Department of Geology, ONR Geography Branch, New York
12. Praveen K, Kshitij M Sameer M Aariz A and Varun N (2017 ) A GIS-based approach in drainage morphometric analysis of Kanhar River Basin, India *journal of Appl Water Sci* 7:217–232 DOI 10.1007/s13201-014-0238-y [
13. Praveen et al (2014), A GIS-based approach in drainage morphometric analysis of Kanhar River Basin, India. *Journal of Appl Water Science* 7:217–232. DOI 10.1007/s13201-014-0238-y

14. Horton RE (1945), Erosional development of streams and their drainage basins; hydro-physical approach to quantitative morphology. Bull Geol Soc Am 56:275–370
15. Reddy OGP, Maji AK, Gajbhiye SK (2004), Drainage morphometry and its influence on landform characteristics in a basaltic terrain, Central India—a remote sensing and GIS Sayeed et'al 2017
- 16.
17. Strahler AN (1964), Quantitative geomorphology of drainage basins and channel networks. In: Chow VT (ed) Handbook of applied hydrology. McGraw-Hill, New York, pp 439–476
18. Sumantra (2016), Analysis of GIS Based Morphometric Parameters and Hydrological Changes in Parbati River Basin, Himachal Pradesh, India, Journal of Geography & Natural Disasters, 6 (2) pp 1-8 doi:10.4172/2167-0587.1000175