



FIG Working Week 2024

19-24 May

Accra, Ghana

Your World, Our World:
Resilient Environment
and Sustainable
Resource Management
for All

Improving Monitoring and Evaluation of Performance using Spatial Data: Case Study GWL

Gs. Ing. Surv. Michael Nyoagbe, Ghana

Gs. Surv. David Nunoo, Ghana

Ing. Mawunyo Kofiloto, Ghana

Ing. Gs. Surv. Rosaline Arthur, Ghana

ORGANISED BY



PLATINUM SPONSORS





FIG Working Week 2024

19-24 May

Accra, Ghana

Your World, Our World:
Resilient Environment
and Sustainable
Resource Management
for All

OUTLINE

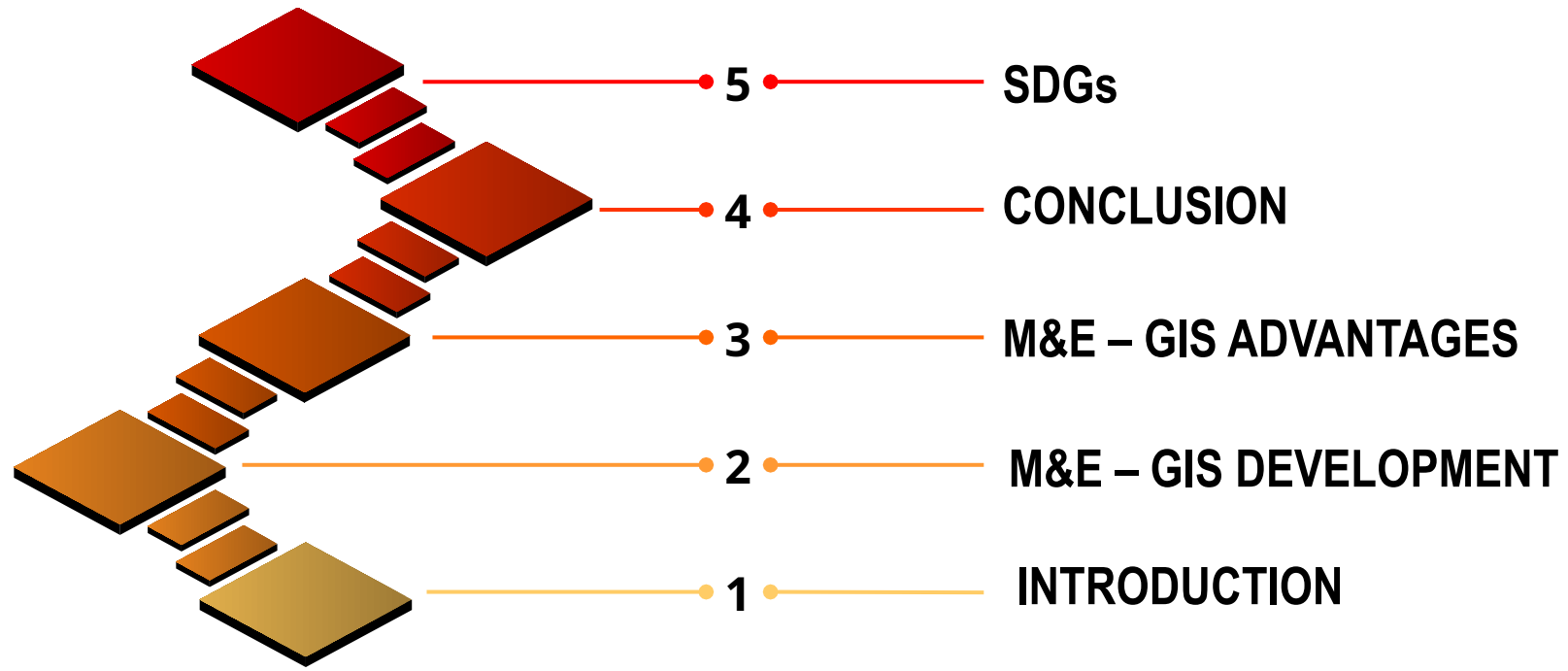




FIG Working Week 2024

19-24 May

Accra, Ghana

Your World, Our World:
Resilient Environment
and Sustainable
Resource Management
for All

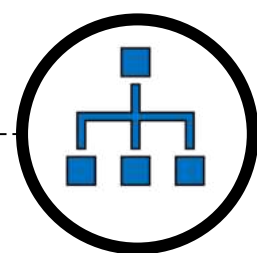
INTRODUCTION



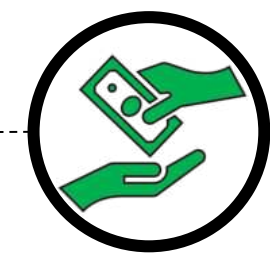
Abstraction and Treatment of raw water from **surface water** and **groundwater** sources



Treated water is **Transported** through relatively large transmission networks



Water is further distributed through a **network of mains** to consumer premises/households



Consumers are **billed** with applicable tariffs, and are expected to honor the bills delivered to them



FIG Working Week 2024

19-24 May

Accra, Ghana

Your World, Our World:
Resilient Environment
and Sustainable
Resource Management
for All

INTRODUCTION CONT'D

KPIs	ASHANTI NORTH REGION					Total Complaints (%)	Ranks
	ABOABO	SUAME	TAFO PANKRONO	ASOKORE MAMPONG	OFFINSO		
C1 Complex Tariff	0.58%	0.00%	21.95%	5.97%	2.61%	3.90%	9
C2 Estimated Bill	0.00%	7.14%	0.00%	0.00%	0.00%	0.69%	15
C3 Over Billing	2.34%	23.81%	0.00%	31.34%	0.90%	9.86%	4
C4 Meter Replacement	0.00%	0.00%	0.00%	4.48%	0.00%	0.69%	15
C5 Penalty	9.36%	21.43%	4.88%	1.49%	3.48%	7.34%	6
C6 Pipe Burst	0.58%	0.00%	19.51%	1.49%	14.78%	6.19%	7
C7 Pipe leakage	4.09%	0.00%	0.00%	4.48%	57.39%	17.43%	2
C8 No Flow	0.58%	0.00%	14.63%	40.30%	2.61%	8.49%	5
C9 Low Pressure	0.00%	4.76%	0.00%	1.49%	0.00%	0.69%	15
C10 Quality of water	0.00%	2.38%	0.00%	0.00%	0.87%	0.40%	19
C11 Incorrect Meter Reading	1.17%	0.00%	7.32%	0.00%	0.87%	1.38%	13
C12 Faulty Meter	2.92%	4.76%	0.00%	5.97%	1.74%	2.98%	10
C13 Stolen Meter	5.85%	0.00%	4.88%	0.00%	0.00%	2.75%	11
C14 Illegal connection	1.75%	0.00%	0.00%	0.00%	0.00%	0.69%	15
C15 Wrong Disconnection	0.00%	0.00%	9.76%	0.00%	0.00%	0.92%	14
C16 Delay in connecting Water	0.00%	0.00%	0.00%	0.00%	0.00%	0.00%	20
C17 High Estimate	45.03%	4.76%	0.00%	0.00%	0.00%	18.12%	1
C18 Wrong Category of Service	3.51%	0.00%	0.00%	0.00%	0.87%	1.61%	12
C19 Poor Accessibility to Company	0.00%	0.00%	0.00%	0.00%	0.00%	0.00%	20
C20 Untimely Response to Complaints	0.00%	0.00%	0.00%	0.00%	0.00%	0.00%	20
C21 Enquiries	17.54%	0.00%	17.07%	0.00%	7.83%	10.55%	3
C22 Request for Statement	4.68%	30.95%	0.00%	2.99%	0.00%	5.28%	8
Total Complaints (%)	100.00%	100.00%	100.00%	100.00%	100.00%	100.00%	



ORGANISED BY



PLATINUM SPONSORS





FIG Working Week 2024

19-24 May

Accra, Ghana

Your World, Our World:
Resilient Environment
and Sustainable
Resource Management
for All

M&E – GIS DEVELOPMENT



User login Interface

Details	Performance Indicator	Baseline	Mapped	Unit	Actual
<input type="checkbox"/> Validated water nework	0	0	KM	536	
<input type="checkbox"/> Validated Network from As-built	0	0	KM	156	
<input type="checkbox"/> Digitize all Walks & Cycles	0	0	%	533	
<input type="checkbox"/> Mapped Customer locations	0	0	%	245	
<input type="checkbox"/> Validate status of untraceable accounts	0	1,0	%	444	
<input type="checkbox"/> New Service Connection Mapping	0	0	%	13.4	
<input type="checkbox"/> Training on Use of Maps	0	0	%	56	
<input type="checkbox"/> Leakage Location	0	0	%	6	

Reports and KPIs



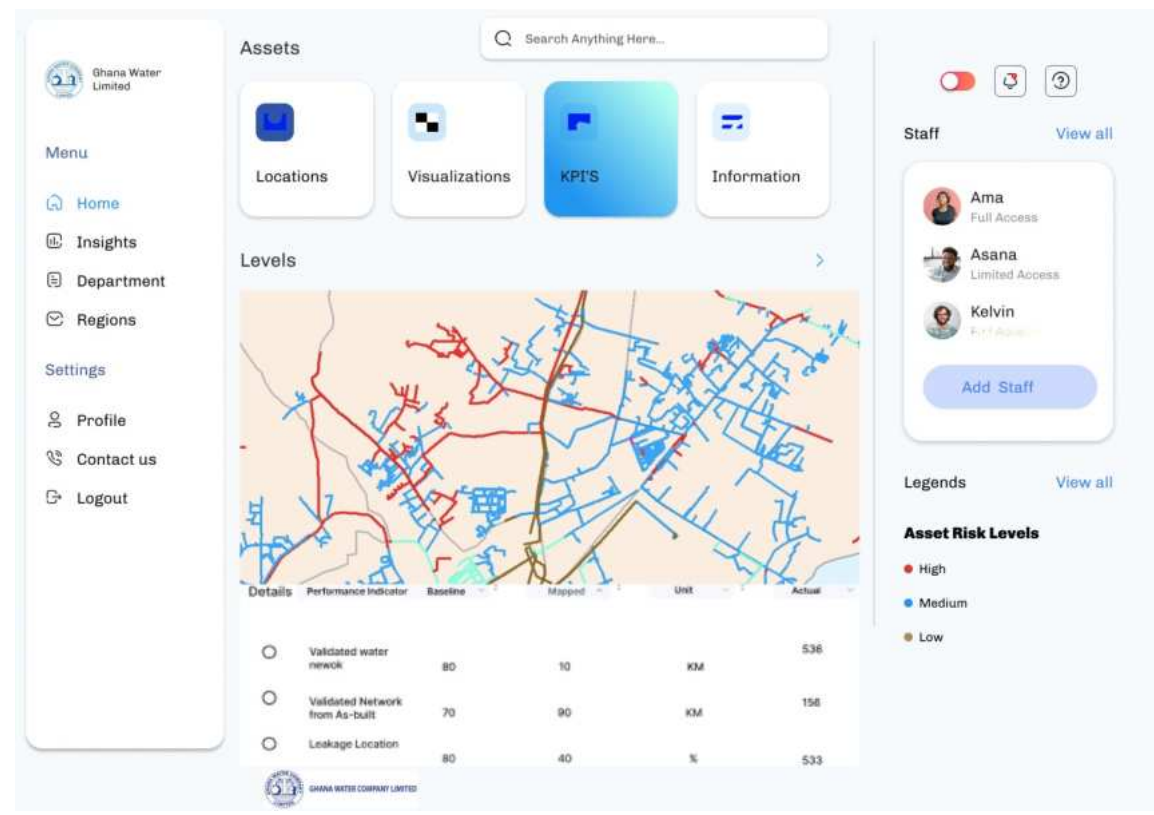
FIG Working Week 2024

19-24 May

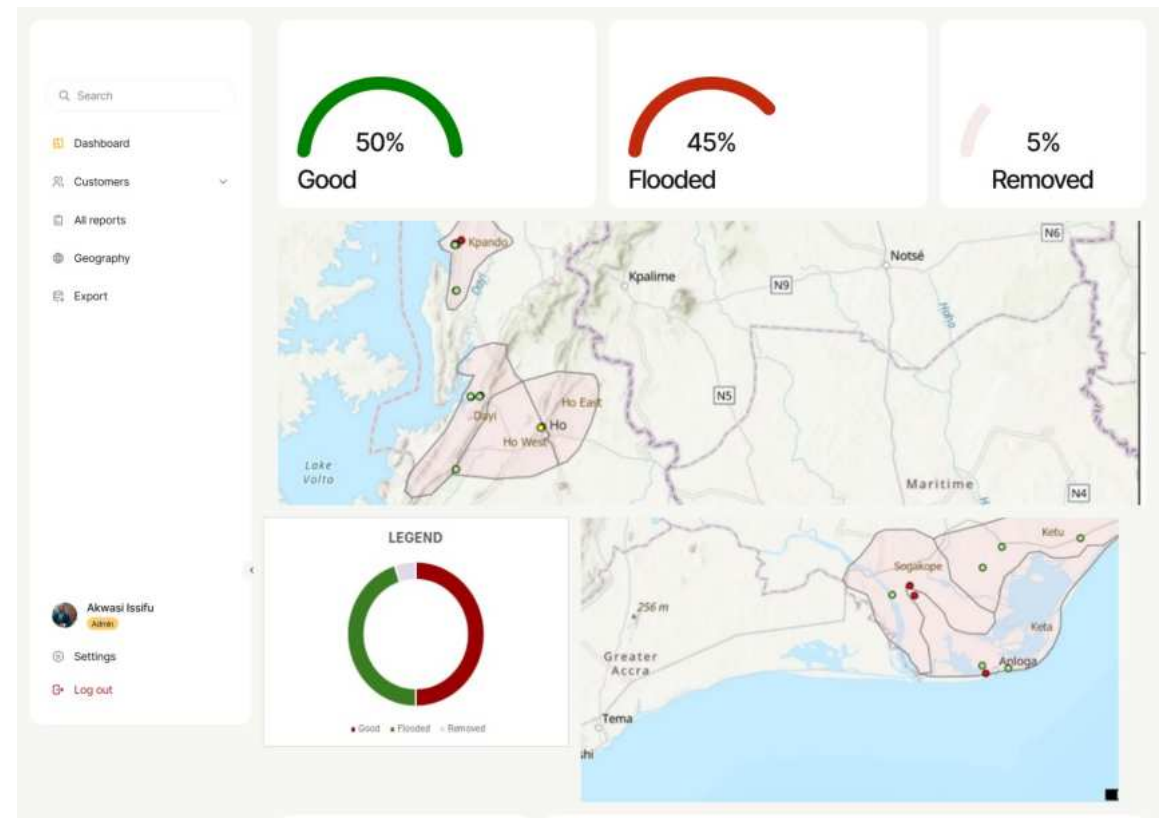
Your World, Our World:
Resilient Environment
and Sustainable
Resource Management
for All

Accra, Ghana

M&E – GIS DEVELOPMENT CONT'D



Asset Risk levels based on historical maintenance



Status of production meters in Volta Region



FIG Working Week 2024

19-24 May

Accra, Ghana

Your World, Our World:
Resilient Environment
and Sustainable
Resource Management
for All

M&E – GIS ADVANTAGES

- Comprehensive and user friendly.
- Centralized database & General Structure.
- Improved asset management.
- Easy monitoring & analysis of performance trends.
- Reduction in Scope 1 emission.

ORGANISED BY



PLATINUM SPONSORS





FIG Working Week 2024

19-24 May

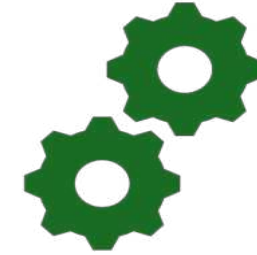
Accra, Ghana

Your World, Our World:
Resilient Environment
and Sustainable
Resource Management
for All

CONCLUSION



The study on the improving Monitoring of performances using spatial data by GWL has demonstrated the potential of improving insights gleaned from data to improve performance which was not considered beforehand.



The proposed system provides very valuable insights to the M&E team to drill deep into operational gaps to improve the efficiencies of the utility.

ORGANISED BY



PLATINUM SPONSORS





FIG Working Week 2024

19-24 May

Accra, Ghana

Your World, Our World:
Resilient Environment
and Sustainable
Resource Management
for All

SUSTAINABLE DEVELOPMENT **GOALS**

International Federation of Surveyors supports the Sustainable Development Goals

Commission 4

Hydrography

SDG 6 & 13

Serving Society for the Benefit of People and Planet



ORGANISED BY



PLATINUM SPONSORS





FIG Working Week 2024

19-24 May

Accra, Ghana

Your World, Our World:
Resilient Environment
and Sustainable
Resource Management
for All

Thank You

ORGANISED BY



PLATINUM SPONSORS

